

Foreward

On behalf of the executive and committee of the St Albans Cricket Club, it gives me great pleasure to welcome you to the 100th anniversary celebrations of our club.

We hope that you enjoyed your centennial weekend and that you have been able to attend several or all of the activities that the organising committee of Selwyn Cox, Graham Curgenvin, Scott Mason, Lindsay Serra and myself have organised for you. We also thank Bob Mather and Noel McGregor and their helpers for organising the golf and bowls part of the weekend.

Obviously it has been a time to meet old playing mates and friends, relive the days when you were associated with the St Albans Cricket Club, view old memorabilia and photographs and meet the players who we have now. We are sure that many a yarn has been told or retold over a beer or wine during the various events and many old friendships have been rekindled.



**St Albans Cricket Club
president
Alan Jamieson**

Our club has survived some difficult times: the great depression, war years, ground issues, relegation threats, social concerns, local body and government legislation, lack of numbers and financial setbacks to name a few, but we have weathered these adversities to become one of New Zealand's leading clubs.

The challenge ahead is to make sure a group of administrators, players and supporters are found to continue the present momentum and ensure the history, traditions, profile, success and growth of the club are preserved and fostered.

Taken over a range of criteria we have arguably a top 10 New Zealand cricket club now, but cricket is not played in the 'now'. We must be proactive and open-minded about where cricket and, particularly, club cricket might be positioned in the years to come.

Cricket may not be played, as we know it now, in 20 or 30 years time. We must be leaders in any change and embrace the new ideas, formats and geographic changes that may evolve or be presented by the authorities, as they strive to keep the game alive and well.

We will never forget all the administrators and former playing members that have got the club to 100. Your work and effort has all contributed to where the club is positioned today.

Good luck to the next generation of players and administrators. Hopefully many of us will meet again when the club celebrates its 125th birthday.

A handwritten signature in black ink, appearing to read 'Alan Jamieson', written in a cursive style.

Alan Jamieson
President and Chairman of the Centennial Committee

The St Albans Cricket Club would like to acknowledge with thanks the contributions of John Coffey, Duane Pettet and Alan Newton (Toltech Print) who were responsible for the research, writing, statistics and printing of this publication. Thank you.

The formative years

Hagley Park was the home of Canterbury cricket long before the St Albans club came into being. The game was brought to the new colony by the original settlers and a club formed within six months of the arrival of the First Four Ships.

The oval upon which generations of St Albans players have performed was in use by the 1860s and for the next 40 years the United Canterbury and Midland clubs were the backbone of the sport. There was even an earlier St Albans club during the late 19th century.

The Canterbury Cricket Association was formed in 1877, charged with managing the grounds at Hagley Park and administering the sport. It was to be another quarter of a century before the first steps were taken towards introducing district club cricket.

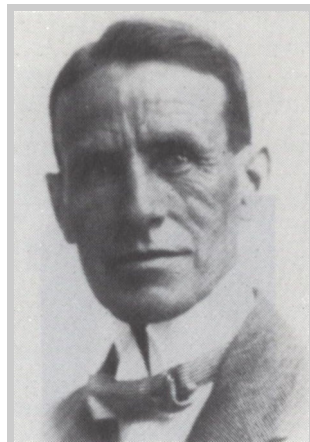
Midland and United, faced with losing their identities, protested but to no avail.

On June 20, 1905, the district scheme was adopted, with Linwood registering 46 players, Riccarton 46, Sydenham 45, St Albans 43, West Christchurch 35, and East Christchurch 34.

St Albans was formed at a general meeting held in the Wesleyan School Room on Rugby Street on August 31, 1905. Tom Reese chaired the meeting and moved the resolution to constitute the club.

The meeting was told the club would have to use Hagley Park in its first season, at a cost of about 35 pounds but it was hoped to have a ground of its own for the following season. A century later we are still here, and happy to be so.

Original club colours of blue with red binding and monogram were changed to navy blue and light blue in 1909/10.



Tom Reese: chairman of the founding meeting of the club in 1905

The first day's play

District cricket came somewhat damply to Christchurch, proving inclement weather is by no means a recent problem. St Albans was drawn to play Linwood at Lancaster Park and The Press was severe in its criticism of the playing field.

The ground was hardly fit to play football on, let alone cricket, a great deal of the north end being under water, it reported.

Original St Albans captain A Kinvig lost the toss and St Albans was sent in to bat. An unbeaten 33 by W C H Wigley, an innings described as capital cricket, considering the adverse conditions, got St Albans through to 74.

Linwood lost captain S Orchard with a finger injury while fielding and slumped from 12 for one wicket to 41 all out. K M Ollivier (6-26) and Greenwood (3-14) bowled through the innings.



J S Barrett: played in the first St Albans senior men's side and was later president of the club

By stumps St Albans had extended its overall lead to 65 runs with nine wickets in hand. But a game which had started on October 21 was not completed until November 18 because of two rain-outs and the early custom of not playing on New Zealand Cup day at Riccarton.

The St Albans second innings ended at 137, with G W Garrard top-scoring on 42. Linwood needed 171 to win and seemed doomed to defeat at 124 for eight. But E O Farrell and A E Young combined in an unbeaten partnership of 47 to win the game by two wickets.

St Albans also fielded a second grade team and two third grade sides in its debut season. The second grade side lost by three wickets with Christ's College scoring the winning run in the last available over in the match, despite St Albans having taken an 84-run first innings lead. The third grade A team beat Riccarton B but the St Albans B team lost to Riccarton A.

THE PRESS, MONDAY, OCTOBER 23, 1905.

CRICKET.

SATURDAY'S PLAY.

The various competitions under the auspices of the Canterbury Cricket Association were started on Saturday, when the weather was fine and warm, but the grounds were very heavy owing to the quantity of rain which had fallen during the week, and in nearly every instance the bowlers had the batsmen at their mercy. A fair number of spectators attended at all three grounds. Details:—

FIRST GRADE.

ST. ALBANS v. LINWOOD.

These teams commenced their match at Lancaster Park, where the ground was hardly fit to play football on, let alone cricket, a good deal of the north end being under water. It is therefore not surprising that run-getting was very difficult, and no big scores were made. Orchard, the Linwood skipper, won the toss from Kinvig, and sent the latter's side to bat. The bowlers had the upper hand, and had the wickets were down for 18 runs. A meritorious stand by Weston and Wigley then carried the score to 48, and the innings eventually closed for 74, Wigley carrying out his bat for 33, made by capital cricket, considering the adverse conditions. R. Ridley and Read did the bulk of the bowling, and the former trundled excellently, getting good figures. The Linwood batting was even more feeble than that of their opponents had been, the seventh wicket falling with the score at 12. Some spirited hitting by O'Farrell improved the position, and batting a man short—Orchard had injured his finger—the venture closed for 41. Ollivier and Greenwood bowled unchanged. St. Albans had forty minutes' batting again, and they had made 32 for two wickets when stumps were drawn. The fielding on both sides was capital, and some very good catches were made.

Scores:—

ST. ALBANS.	
First Innings.	
T. W. Reese, b Ridley	1
K. M. Olivier, c Danks, b Read ..	5
C. W. Garrard, lbw, b Ridley ..	11
J. S. Barrett, c Young, b Ridley ..	1
A. Kinvig, c O'Farrell, b Ridley ..	0
W. C. H. Wigley, not out	33
G. T. Weston, b Costelloe	14
R. Vincent, b R. Ridley	3
H. N. Taihot, b Read	2
J. Smith, c Orchard, b Ridley ..	0
Greenwood, c A. Ridley, b Read ..	3
Bye	1
Total	74
Bowling Analysis—R. Read, 16 overs, 5 maidens, 27 runs, three wickets; R. Ridley, 16 overs, 5 maidens, 33 runs, six wickets; A. O'Farrell, 4 overs, 1 maiden, 10 runs; H. Costelloe, 4 overs, 1 maiden, 4 runs, one wicket.	
Second Innings.	
W. C. H. Wigley, c sub., b O'Farrell ..	2
K. M. Olivier, not out	22
—, Greenwood, c sub., b A. E. Ridley ..	8
R. Vincent, not out	0
Total for two wickets	32
LINWOOD.	
First Innings.	
J. Wheatley, b Olivier	2
H. C. Ridley, c and b Ollivier ..	3
J. Danks, c Smith, b Greenwood ..	3
A. E. Ridley, c Wigley, b Greenwood ..	1
—, Crichton, at Weston, b Ollivier ..	3
R. Ridley, b Ollivier	4
R. Read, c Barrett, b Olivier ..	0
A. E. Young, b Greenwood	0
E. O'Farrell, not out	19
A. Costelloe, at Weston, b Ollivier ..	5
Leg-bye	1
Total	41
Bowling Analysis—K. M. Olivier, 8 overs, 2 maidens, 26 runs, six wickets; Greenwood, 7 overs, 2 maidens, 14 runs, three wickets.	

SECOND GRADE.

Christ's College and St. Albans commenced a match on the former's ground, when St. Albans batted first, and made 116 (W. B. Fox 26, Davey 26 not out, Taylor 18, F. Horner 13, and G. Horner 12); College, 42 (Saunders 19). A. Rutherford bowled best for the College, and Pritchard and O'Brien for St. Albans.

THIRD GRADE.

The contest between St. Albans A and Riccarton B teams began at Hagley Park, when the latter batted first, and made 46 (Anderson 10 and Jones 10). Clarke took eight wickets for 22 runs. St. Albans replied with 48 (Evans 13 and Thompson 12). Doig took seven wickets for 12 runs for Riccarton, who made 24 for two wickets in their second innings.

St. Albans B and Riccarton A teams commenced a match at Hagley Park, and when stumps were drawn the scores were—Riccarton, 43 (O. Caygill 12) and 15 for three wickets; St. Albans 80 (Blackwell 24, Feldwick 14, and Blank 10). Deacon bowled best for St. Albans, and Brunsden and Brooker for Riccarton.

FOURTH GRADE.

St. Albans and Sydenham met at Sydenham, when the home team won by an innings and 2 runs. Scores:—St. Albans 60 (Trewick 16 and Tucher 14) and 30; Sydenham 92 (King 53 and Boyd 18). Russell and Wiltshire bowled well for the winners.

In consequence of the amount of rain which fell between Tuesday night and an early hour on Saturday, the various cricket grounds were partially under water. When inspected by the Committee they were found to be quite unfit for play, consequently those in authority had no other course open to them than to declare all matches off. Next Saturday being New Zealand Cup Day, the Canterbury Cricket Association, as is customary, has declared all competition matches off.

The summary of the first day's play in the new district competition as it appeared in The Christchurch Press on October 23, 1905

The early years

For several years the quest for a suburban home base occupied the minds of club officials. St Albans Park and Elmwood Park were considered, and there were negotiations with the St Albans Hockey Club and Edgeware Bowling Club. The debate lapsed about 1911 when it was pointed out a transfer from Hagley would financially embarrass the other clubs playing there.

In the light of what became reality many years later, it is interesting to note a meeting was called in 1907 to investigate the formation of a St Albans Ladies Cricket Club. Women would be eligible for membership and allowed to use the club's materials and practice pitches. Nothing came of it.

Representative selections were soon coming the way of St Albans players. Reece and Ollivier were already established in Canterbury teams in the pre-district cricket era, and were followed by H A Bishop, C A Cuff, B B Wood, E E Crawshaw, D M Sandman, R G Hickmott, J S Barrett, and L R Brunton leading up to World War I.

Famous Australian cricketer Victor Trumper, who owned a sports shop in Sydney, provided the sample of the original St Albans blazers and caps after suitable materials had not been available in Christchurch.

St Albans won its first senior championship in 1909/10, rising from last the previous summer. Don Sandman captured 64 wickets and Wood contributed the first double century with 201 against Riccarton.

The title was retained in 1910/11, after a play-off with Sydenham was won on the first innings. Sandman took 84 wickets in the season, still a St Albans record today. He was also a century-maker, along with Crawshaw and Reese.

Sandman had become the club's first New Zealand representative, in 1909, and extended his international career through to 1921.

The World War I years

In 1913/14 Sandman was joined on the tour of Australia by club-mate Hickmott, an outstanding batsman and occasional bowler. Tragically, Lieutenant Rupert Hickmott was killed in action during World War I.

Some enterprise was shown by the third grade B team in hiring a motor lorry to take them to an away game at Kaiapoi - and having the account sent to the club for payment. A less than amused committee decided to collect the money from the players.

There was to be little humour in club annual reports during the war years. Typical was the resolution expressing regret that secretary V M Edgar had resigned to join the Expeditionary Forces. Edgar was later wounded and invalided home.



Don Sandman (seen here in 1971, aged 81): former St Albans record holder with 737 wickets at 16.14 apiece

The club sent Christmas boxes to its members serving overseas. The 1918/19 annual report listed Geo. M Haigh, R G Hickmott, and G J Harrison as having been killed in action, and R Leeming having died of sickness. Of 20 other members, five had been wounded. R A Parton was awarded the Military Medal.

On a happier note, Tom Reese became the club's first life member in 1918. By then he had made 114 appearances for St Albans. He was later to become president of the Canterbury Cricket Association.

The 1920s

The 1920s were notable for prolific scoring, prompting images of glorious summer afternoons at Hagley Oval. Frank Woods led the way with three double centuries in the 1923/24 season, surely one of the greatest feats in Canterbury club cricket.

Woods hammered a club record 234 against Riccarton, 223 against West Christchurch, and 222 not out against East Christchurch, finishing the season with 1006 runs at an average of 77.38. He was also club secretary.

The club scene was gradually changing. Residential qualifications were lifted, and the High School Old Boys and Christ's College clubs were formed. It was feared the formation of old boys clubs would weaken those already in existence and members were reminded of their loyalty to St Albans. In 1925 a conference was held to discuss a possible amalgamation between St Albans and High School Old Boys.

At a smoke concert after the 1926/27 season a gold medal was presented to the most improved player, a young fellow named Frank O'Brien. That launched a career which extended to a record 237 appearances. By the time he stopped in 1954 O'Brien was to play more innings, score more runs, more centuries and half-centuries, and hold more catches than any other St Albans player.

That summer Neil Dorreen (226 not out) and Harry North (65 not out) shared an unfinished third wicket partnership of 311 runs against West Christchurch. With Woods (105) and Cyril Crawford, who had toured Australia with the New Zealand team the previous season, having opened the innings with a 134-run stand, St Albans had the luxury of declaring at 505 for four.

Within two years of New Zealand being accorded full international status M L (Curly) Page became St Albans' first Test cricketer. An All Black in 1928, Page had transferred from High School Old Boys for the 1930/31 season. He toured England during the next southern winter and captained New Zealand in a home series against South Africa.

The 1930s

Financially, the club and many of its members were battling. Concessions were made to those who found it difficult to pay their full dues in times of depression. The 1932 annual report disclosed a bank balance of just four pounds, with 10 times that amount owed in unpaid subscriptions.

In 1934 St Albans was offered the chance to relocate to Rugby Park. It was declined on the grounds that the costs had not been clearly defined, a drop in membership numbers was probable, and because of the history and traditions being built up at Hagley Park.

St Albans gained some much needed bowling depth to complement its free scoring batsmen in the mid-1930s. Tom Burt took the first 20 or so of his 754 wickets, and Ted Mulcock claimed the first of his 523 victims. Mulcock went on to capture a hat-trick in an analysis of eight for 61 while playing for Canterbury against Otago.



St Albans club members take to the field for a practice game on the opening day of the 1932/33 season

The World War II years

War clouds were again looming, however, and St Albans began losing players such as Canterbury wicket-keeper Bob Webb to the First Echelon. Christmas parcels were again on the agenda, and club member E Berry earned the Distinguished Flying Cross for bravery while serving with the Royal Air Force.

Counting those undergoing military training, it was estimated 50 per cent of the active membership was in uniform. St Albans was at first able to maintain its individual identity as army and air force sides joined the senior competition in 1940/41. News came through that Webb had been wounded and taken prisoner in the second Libyan campaign.

The player drain inevitably led to amalgamations, with West Christchurch in 1942/43 and West Old Boys in 1943/44. Sydenham had amalgamated with East Christchurch, Riccarton with Old Collegians, and Lancaster Park with Old Boys to play against four services sides.



The St Albans senior men's team of 1945/46 takes to the field (from left): Fred Blackwell, Jack Smith, Bill Morley, Frank O'Brien, Alex Henderson, Ray McLauchlan, Sid McCann, Tom Burt, Ted Casey, Ted Mulcock and Paul Nelson. This post-war XI alone ended up with over 900 senior caps between them.

The post-war years

When normal competitions resumed with a 10-team competition - with the bottom two to be relegated at summer's end - St Albans had the mortification to finish ninth, ahead of only Technical Old Boys. It was only saved from losing its senior status by the support of the other original open clubs.

They feared that closed clubs would eventually be in the majority. Old Boys and Old Collegians had been joined by West Old Boys and Technical Old Boys. St Albans was reprieved by a motion that the senior competition be comprised of six open clubs and two closed clubs.

St Albans justified its retention by climbing to fifth in 1946/47, and providing left-arm spin bowler Tom Burt to the New Zealand team which played Walter Hammond's English tourists. Burt, also skilled with a hockey stick, thus became a double international. He was to capture more than 100 wickets on the 1949 tour to England, and represent New Zealand until 1953.

In 1948/49 the seniors created a club record high score of 513 against West Christchurch, the innings occupying the whole first day. English player-coach L F Townsend led the way with 105 not out, Graham Coull made 101, Frank O'Brien 91, Zin Harris 89, and Jack Smith 59. A week later West's openers raced on 247 runs before the side collapsed from 350 for four to be all out for 419.



The St Albans second grade B team in action at Hagley Oval on the first day of the 1947/48 season

The early 1950s

The 1950s began with an annual report recording St Albans successes in the first, second grade A, and fourth grade A competitions, and heralded the arrival of Parke Gerald Zinzan (Zin) Harris with an innings of 49 for Canterbury against Australia. He developed into one of the very best batsmen in an era packed with good cricketers and personalities.

Burt's international career ended just as that of stylish batsman and accurate off-spinner Matt Poore began, in the home Tests against the 1952/53 South Africans. Poore was then chosen for the return tour to that country, while Harris was considered unlucky to miss out after a rain-affected trial. Leg-spinner and former club member Bill Bell was also in the touring team.



Bill Bell: one of 58 St Albans players to represent Canterbury (and later New Zealand)

Throughout its history St Albans had shared with West Christchurch the pavilion now occupied by the Canterbury umpires association. It was by no means the splendid, refurbished building that we see today. It was too small for its purpose, and constantly in need of repair.

The first serious moves towards financing the present pavilion were taken in 1953 when Cyril Crawford, who followed his playing days with an equally illustrious administrative career, came up with the inspiration to raffle what was then the only child's pedal car in the country. That put 500 pounds in the kitty.

At that stage it was intended to replace the old pavilion with a joint venture between St Albans and West Christchurch. But when the Christchurch City Council declared the building unsafe, the matter became more urgent and West officials admitted they were not able to contribute towards the costs of finding a new pavilion.

The 50th jubilee year and late 1950s

The club's 50th anniversary was celebrated in style when the first grade side won the 1954/55 championship. Harris became Canterbury captain, leading club-mates Burt, Poore, and Coull in red-and-black. Poore played for New Zealand against England, and he was joined by Harris on the pioneering tour to India and Pakistan of 1955/56. Burt retired from first-class cricket, receiving a tumultuous reception at Lancaster Park when going out to bat against the MCC.



Tom Burt batting late in his career - he fell just two runs short of notching up 4000 for St Albans in first grade cricket

The jubilee was celebrated in March 1955, and a special Monday afternoon match was played between teams captained by Bob Webb and Trevor Tucker. A dinner was held at the United Service Hotel in Cathedral Square, with wives and girlfriends invited to a film evening and supper at Wilding Park a month later. Such were the customs of the day.

Just when plans were about to be prepared for the new pavilion it was learned the defunct Addington Tennis Club wanted to dispose of its building in Poulsen Street. The St Albans tender of 175 pounds was successful, and a contractor agreed to move it to Hagley Oval for 530 pounds. More raffle tickets were distributed to cover the costs.



Play on the first day of the 1956/57 season at Hagley Oval - the building at the left of those in the background is the new St Albans pavilion, moved to the ground from Addington just a few weeks earlier



The original St Albans pavilion as it was in 1957 - it is now the Canterbury umpires' pavilion, located next door to the new pavilion

A contemporary report in The Press described our headquarters as one of the few structures to be built from the top down. In its original form it was too tall to be transported under overhead wires, so the top floor was taken to Hagley first and supported on piles. The lower floor was then placed under it, much as one might shut a drawer.

After years of overcrowding in company with West Christchurch, the players enjoyed the luxury of a fine social area, spacious changing facilities, and a magnificent view overlooking the oval. The balcony was added in the spring of 1965 and extensive renovations were made to the ground and top floors a decade later.

St Albans' third Test player of the 1950s was all-rounder (batsman, bowler and wicket-keeper) Sam Guillen, who had settled here after touring with the West Indies in 1952 and first played with West Christchurch. Guillen was to share in New Zealand's first-ever Test triumph - ironically, against his homeland - at Eden Park in 1956. Team-mate Noel McGregor, then from Otago, later joined St Albans after moving north.



Sam Guillen: a true all-rounder - batsman, bowler, wicket-keeper and played Test cricket for two different countries

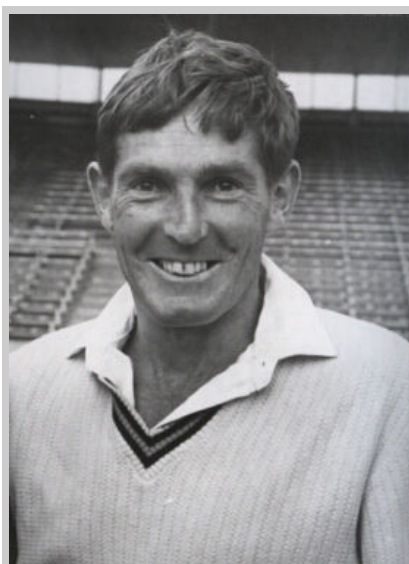
The 1960s and early 1970s

Zin Harris was cheered from afar by his fellow Saints, who listened on radio as he raised his Test century in the victory at Cape Town in 1961/62. Thirty years earlier Curly Page had been the club's first Test centurion at Lord's.

At a lesser representative level Alan Taylor captured all 10 wickets (nine caught, one leg before wicket) for 83 runs off 28.5 overs of medium-paced toil for Canterbury B against Wairarapa at Masterton.

Another championship success in 1963/64, under the astute leadership of Alan Bailey, was notable for the arrival of West Australian medium-fast bowler Ken Ferries. In his team report Bailey expressed the hope Ferries could be persuaded to stay one more season. Stay he did, for Ferries was senior captain in the 75th anniversary season, 1979/80.

Hard-hitting all-rounder Bruce Taylor was chosen as the club's 10th national representative in 1966/67 during an all too brief term with St Albans. New Zealand fast bowler Murray Webb was to spend the 1972/73 summer at Saints.



**Ken Ferries: 17-year stint
at St Albans after arriving
from Western Australia**

There was strength in depth during the early 1970s. Jimmy Mills and Peter Guerin shared a 310-run second grade opening partnership against Christ's College, only one short of what was believed to be the club record. Meanwhile, long-serving Ted Mulcock was trundling away towards his 900-plus wickets in the President's grade.



Zin Harris: became the second St Albans player to score a Test century after Curly Page



Murray Webb: tearaway quick bowler who played three Tests for New Zealand



Wayne Burtt: one of St Albans' many Canterbury players in the 1960s and 1970s



Bruce Taylor: brief time at St Albans during his New Zealand representative career

The men's and women's clubs amalgamate

In 1975 negotiations were opened to amalgamate with the St Albans Women's Cricket Club. Following a trend, the two clubs decided on a trial association during which the women would have the use of net practices and club facilities. The knot was officially tied at a special meeting in the spring of 1977.

Established in 1937, St Albans had won more women's championships than any other club at the time of the merger and in its heyday fielded two evenly selected senior teams which often keenly contested the title.



Founding members Helen Steere, Joan Stevens and Peg Hooper at the 21st anniversary of the St Albans Women's Cricket Club in 1958

Its formation could be traced back to the demise of a High School Old Girls club. Of the three enthusiasts, two lived in St Albans - Helen Steere and Joan Stevens - and wanted to continue playing. They joined with Peg Hooper and the naming of the fledgling club as St Albans was not difficult, with Malvern Park to be the home ground in that suburb. It remained the club's base until the late 1960s.

The feats of legendary Phyllis Blackler are interwoven into the history of St Albans women's cricket. She was a veritable female W G Grace, her representative career spanning an incredible 35 years and including tours to Australia in 1938 and 1958 and England in 1954 and 1966. Blackler's highest Test score of 68 was achieved on that farewell tour; in 1946/47 she had made Canterbury's first double century; and she bowled with success at all levels.

When Ann McKenna captained Canterbury against England in 1968/69 she had seven club-mates alongside her. McKenna and Janice Stead, who had toured England in 1966, played in the Tests against the tourists, while Stead, Jackie Lord, Denise Jelley, Sue Rattray, Vicki Burt (née McGregor) and Sheree Harris earned international honours in the 1970s.



Phyl Blackler: all-time great of St Albans, Canterbury and New Zealand women's cricket



Members of the championship winning St Albans women's side of 1959/60. The side featured eight players who were then current or future Canterbury players. Two of these also represented New Zealand in Tests - Janice Stead (front row, second from left) and Phyl Blackler (front row, far right).



A plethora of St Albans players were selected for New Zealand in the 1960s and 1970s. Among them were (clockwise from top left): Ann McKenna, Jackie Lord, Sue Rattray and Vicki Burt.

The mid to late 1970s

Meanwhile, skilful left-arm spinner Stephen Boock spent the first of his three seasons at St Albans in 1975/76 and became our fifth Test player and 11th to wear the black cap. Two years later Boock set a national first-class record of 66 wickets, shared in the momentous first victory over England, and then toured that country before, sadly, returning to Dunedin.

St Albans pioneered twilight cricket on Monday evenings, with players enjoying both their games on Hospital Corner and the after-match functions in the pavilion. The club also arranged the first indoor tournament to be held in the South Island, for men and women, at the then new Pioneer Stadium. Another diversion was the formation of AFC St Albans, playing in the Canterbury Football Association competitions.



Most attention in a sporting club inevitably falls upon the players and the administrators. But the name of Ron Johnson, the senior scorer for more than 30 years, will always have a proud place in our history. Ron worked quietly and efficiently in the background to make life more comfortable for so many of our members and also gave great service to Canterbury and the Riccarton club. The Government recognised his services to the Post Office with an appropriate award and St Albans acknowledged his selfless deeds with life membership.

The 1980s

The 75th anniversary celebrations, held in early April 1980, included a Past versus Present and other cricket matches at Hagley Oval, a banquet and ball at the Winter Garden, another evening function at the Hagley Sports Centre and a golf match at Harewood.

After seven years as club captain, Alan Jamieson stepped up to begin a term of president which was to extend for the next quarter-century, leading up to the club's centenary. The heavy off-field workload did not affect his on-field performances in the lower grades. In 2001/02 Jamieson won the Tom Burt Memorial Trophy for most wickets in any grade; he had previously held that piece of silverware in 1970/71.

The early 1980s were marked by consistently high performances throughout the grades, as St Albans won the Petersen Shield as the top all-round club in Canterbury for 1980/81, 1981/82 and 1982/83. There were to be three more successes before the decade was over and four more in the 1990s.

Individual feats were notable in 1982/83. Ann McKenna (88 not out) and Vicki Burt (148 not out) established a new women's record partnership of 242 unbroken, Paul Rutledge claimed 10 wicket-keeping dismissals in a match and President's grade batsman John Coffey scored unbeaten centuries on three consecutive Saturdays.



Paul Rutledge: more than twice as many dismissals for St Albans than any other wicket-keeper



The extension added to the top floor of the pavilion interior (above) and the subsequent extending out of the balcony (below)



Some major rebuilding took place at the clubrooms in late 1984. The existing changing area was extended, the upstairs lounge was lengthened and a separate changing room and entranceway added downstairs with extra showers and toilets. A building bought for 175 pounds in 1956 was now valued for insurance purposes as having a replacement worth of \$346,000.

On the field, Rutledge demolished the old Canterbury club wicket-keeping record, Geoff Smith surpassed Frank O'Brien's senior men's record for most catches and Ann McKenna toured India with the New Zealand women's team.

The focus centred on the men's and women's first grade sides as the eighties advanced. The women sparked the sequence of successes with competition wins in 1983/84 and for three seasons from 1985/86. The men not only fell into step in 1986/87 - their first triumph for 22 years - but went on to equal the Canterbury record of four consecutive two-day championship victories. For good measure, they added the one-day title in 1987/88.

McKenna and Burt provided the experience and bundles of runs, and Kirsty Bond (later Flavell), Catherine Campbell, Sarah Illingworth and Brigit Legg were others to make strong contributions to the women's dominance.

All-rounder Neil Francis was the astute captain of a men's team which included players of the calibre of Mark Priest, Andrew Nuttall, Roger Ford, Lyn Sparks, Max Bremner, Ben Harris, Geoff Smith and Paul Rutledge.



**Geoff Smith: St Albans
record 161 catches to go
with his 7924 senior runs**

But it was 18-year-old medium-pacer Brett Harrison who raised eyebrows with a club record bowling analysis of nine wickets for 12 runs from 49 deliveries against Marist.

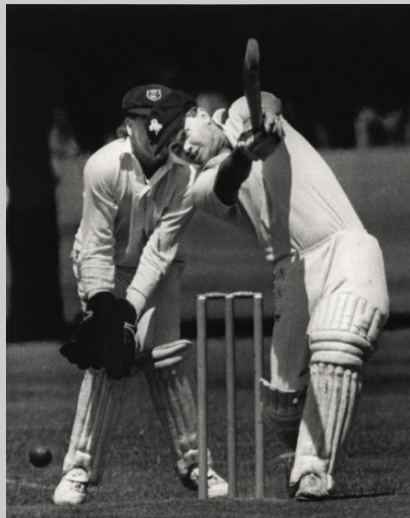
The 1987/88 summer was something of a Harris benefit. With the senior generation of club stalwarts John and Zin nodding approvingly, Ben Harris accumulated a club record 1040 runs (plus 21 catches), young Chris Harris commenced his senior career with an unbeaten half-century, and Tim Harris also featured in the championship-winning first grade team.

Even though the men kept on their winning ways in 1988/89, with second grade winning as well, and Mark Priest (Young New Zealand) and Chris Harris (New Zealand under-20 and under-19) gaining national honours, pride of place went to the inclusion of four St Albans players - Brigit Legg, Kirsty Bond, Sarah Illingworth, and mid-tour replacement Catherine Campbell - in the New Zealand women's World Cup tournament team in Australia.



Brett Harrison: extraordinary figures of 9-12 from 8.1 overs - still a record in all Christchurch one-day cricket

The decade ended on a high with Priest being promoted into the full New Zealand team. He could hardly have been left out after capturing nine wickets for 95 runs (12-162 in the match) for Canterbury against Otago. Legg and Campbell, later joined by Bond for the one-dayers, extended their White Ferns careers against Australia.



A long and proud Harris family tradition at the St Albans Cricket Club (clockwise from top left): father Zin with sons Chris, Tim and Ben. Zin's brother John (not pictured) is the club's patron and a former president.

The 1990s

Chris Harris joined Priest on the international scene in 1990/91, following in the footsteps of father Zin, and his unbeaten 170 was the highest senior score for the club since Sam Guillen's 162 not out 25 years earlier. But the men's first XI slipped down the table when attempting the unique feat of winning a fifth consecutive two-day title. The women compensated for that by regaining their championship status and having Illingworth and Bond chosen for New Zealand.

Captained by Ben Harris, and with new professional Garfield Charles outstanding with bat and ball in both competitions, the first grade men won the 1991/92 two-day championship and shared the one-day title. Chris Harris went to his first World Cup, something which was to become a regular occurrence.

St Albans truly provided the brains trust for the White Ferns against Australia and to their World Cup in England, with Illingworth captain, McKenna coach and Bond also in the side. Long-serving spinner Andrew Nuttall overtook Tom Burt's club record of 26,732 deliveries in senior cricket and a young bloke named Chris Martin arrived from Christchurch Boys High School.

The first grade men claimed their sixth two-day championship in eight years in 1993/94 and qualified top of the one-day competition. Five other men's grades also triumphed and Mark Priest was both Canterbury's

Player of the Year and the Trust Bank Club Player of the Year. Not to be outdone, Illingworth, McKenna and Bond retained their respective roles in New Zealand's Rosebowl victory over Australia. Illingworth also compiled three club centuries during the season.



Sarah Illingworth: captained New Zealand 35 times including a World Cup final at Lord's



Neil Francis (left): captain of a dominant St Albans senior men's team, winning four consecutive two-day titles in the mid to late 1980s



The championship winning St Albans women's team of 1986/87 - then featuring seven current or soon-to-be internationals. Front row (from left): Anita Bremner, Ann McKenna (captain), Brigit Legg, Catherine Campbell. Middle row: Sarah Illingworth, Vicki Burt, Tanya Brownlee (scorer), Tracey McNamara. Back row: Kirsty Bond, Delwyn Brownlee.

Justine Russell increased St Albans contingent in the White Ferns camp against Australia and India in 1994/95. Rutledge reached 400 wicket-keeping dismissals - almost 250 more than the next best - and promptly handed over the gloves to concentrate on his batting. Occasional cameo appearances later nudged his total up to 403. The New Zealand selectors must have had a brief fit of sanity, for the harshly treated Priest played alongside Harris for the Black Caps one-day side in South Africa.

Collectively, the women ruled in 1995/96, claiming championships in all four grades. Russell left for Australia but Dutch (and future New Zealand) international Nicola Payne was a valuable addition. Individually, the highlight was Chris Harris' magnificent innings of 130 in a losing World Cup match against Australia in India. St Albans provided not only the coach (McKenna) and captain (Illingworth), but also the manager (Kay Gilray), when the national women's team toured England. Craig Cumming broke into the Canterbury side; he was later to wear the black cap from Otago.



Nicola Payne: prolific run-scorer for St Albans and Canterbury

Kirsty Flavell (née Bond) became the first player to score a double century in a women's Test match while in England in 1996, a magnificent achievement. On her return, however, she retired and transferred to Auckland. The move was temporary and Kirsty now coaches Canterbury. Illingworth also retired after 15 outstanding seasons of senior cricket. Meanwhile, Chris Harris set a new Canterbury batting record of 251 not out against Central Districts at Rangiora and became the first Cantabrian to register more than one double century in a first-class season. Harris got two, plus a score of 198. St Albans held the Petersen Shield for the fourth time in the 1990s.

After compiling 883 runs in her second season with us, Payne (125 not out) shared a new first grade women's partnership record of 245 unbroken with Jo Lawler (99 not out) against South Canterbury in 1997/98. Priest had another all-too-brief recall to the Black Caps to keep Harris company.

St Albans was blessed with so much depth in its women's section in 1998/99 that two first grade teams were entered. In a thrilling last round the Blue team, inspired by coaching guru McKenna, surged through from fourth to grab the two-day title. That was the highlight of a near clean sweep of the women's silverware, as the club won six of eight available trophies.

Priest assured himself of a permanent place in Canterbury folklore by surpassing Sir Richard Hadlee's record with 290 first-class wickets, then retired. We had gained the services of a new coach and top-order batsman in Cumbrian Steven Knox, who was to become a regular in our ranks.



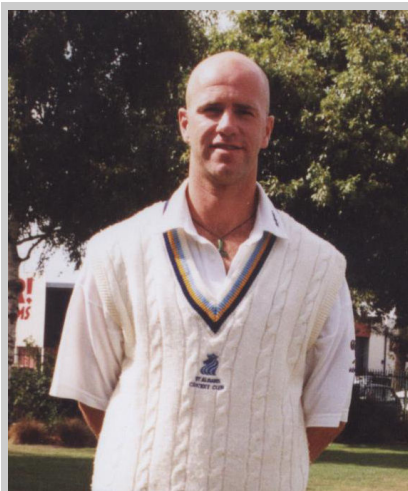
**Kirsty Flavell (née Bond):
the first woman to score
a Test double century**

After having commuted between the Netherlands and New Zealand, Payne settled in this country and made her New Zealand debut alongside Catherine Campbell and Helen Watson in 1999/00. Watson and Amiria Marsh were New Zealand A selections, emulating the recognition of male counterparts Jarrod Englefield and Chris Martin.

The new millennium and beyond

The storm of the decade preceded the drought of the century as the men's first grade team, captained by Knox and with Englefield contributing four centuries, reclaimed the two-day championship in 2000/01.

Martin was called to South Africa to reinforce a New Zealand team which already included Harris. At Lincoln, Campbell played in the pulsating four-run victory over Australia to win the women's World Cup. It was Campbell's fourth cup tournament since 1988 and her swansong. Payne was also a member of the White Ferns squad, while at club level she scored 132 and joined with Beth McNeill (94) to equal the all-time partnership record of 245 against Sydenham.



Steven Knox: captained St Albans to one two-day and two one-day titles as overseas professional

In 2001/02 the men retained their two-day trophy, overcoming the sudden departure of captain-coach Darron Reekers in mid-season. Neil Fletcher took over the captaincy and Ian Blanchett was our English professional. A total of seven grade wins also included the women's one-day and two-day competitions and the men's knock-out final. Harris and Martin were Black Caps and Sarah Burke was to have joined Payne on the cancelled White Ferns tour to India. Emily Travers, who joined us from Palmerston North, captained and McNeill played in the New Zealand A team in Australia.

Knox returned to lead the first grade men to the one-day title in 2002/03. Harris, Payne and Burke were our internationals, though Payne was to retire after eight seasons with St Albans and move to Wellington. She left with a club record of 10 centuries, one more than the legendary Phyllis Blackler. Burke, McNeill and Rowan Milburn were in the New Zealand A side.

St Albans was again to the forefront of the 99th (2003/04) inter-districts season, with the senior men claiming their fourth one-day title and the women winning every grade from first (for the 29th time) to fourth. The Petersen Shield was also back in the trophy cabinet after an absence of six years.

Martin, having earned a Black Caps recall, produced this country's best bowling analysis (11 for 180) against South Africa during the home Test series and became the fastest New Zealander to capture 50 Test wickets. Harris extended his illustrious one-day career, while Burke, McNeill, Aimee Mason and Amanda Green were chosen for the White Ferns from our club.

The first grade men's season was played under the shadow of having the two-day competition numbers reduced from nine to six in 2004/05. St Albans was never under threat, finishing second. Although the Saints did not come marching in at the national one-day club finals in Auckland the experience will be invaluable when they return to represent Canterbury in April 2005.

By then the club will inevitably have achieved more team and individual successes and players in all grades will have experienced the highs and lows that are liberally sprinkled throughout a cricketing summer.

We will also have celebrated our first 100 years, taken a new guard, and set off in pursuit of our double century.



Chris Martin: St Albans' eighth and most recent Test Black Cap

They also serve ...

While the feats of the cricketers out in the middle are the most visible attributes of any sports club, none would survive without the selfless efforts of those who work away in the background.

St Albans owes so much to a large group of professional and dedicated administrators over the years, from those who were involved in the formation of the district scheme in 1905 to the present day.

Other clubs have felt the strength of St Albans over the last 25 or so years can be attributed to a talented group of officials who have continued the outstanding deeds of such as Charles Collins, Bob Knowles, Ian Dempsey, Arthur Graves and many other members who held office at club, Canterbury and, in some cases, New Zealand levels.

Among the most prominent in modern times have been:

Alan Jamieson, the president and chairman for the last 25 years. Alan has overseen extensive building alterations, the staging of twilight cricket, the introduction of professional coaches, the raising of the club's profile and without doubt has been the driving force and catalyst for many other club initiatives and development plans.

Selwyn Cox, club bar manager for more than 20 years. Selwyn's expertise and knowledge of the club's hospitality requirements have ensured a healthy and regular return from the bar.

Lindsay Serra, the treasurer since 1984, whose responsibilities have included IRD returns, fringe benefits, tax, PAYE, the payment of coaches and establishing new methods of financial reporting. Lindsay's adroit and accurate management of the club's accounts have been a cornerstone of the club's settled management practices.

Graham Curgenvin, who has held a plethora of positions for a lengthy period, including chairman, subscriptions officer, webmaster and social coordinator.

Eleanor Horne, a thoroughly professional secretary for 14 years. Since her retirement in 1999 Eleanor has become the club's very popular caterer.

St Albans has also been fortunate to have had such efficient and accurate scorers such as the late Ron Johnson, Euan West, Mark Ogier, Geoff Gambles and Peter Mayell, who have all attained representative appointments in their own sphere. All have given their time and expertise in a cheerful and committed way.

St Albans has raised its first century in such a healthy state because of the whole-hearted contributions of so many men and women who filled the various official positions, and also those members and friends of the club who have freely given of their time when asked to help.



The St Albans Cricket Club pavilion as it stands today

WALK DOWN MEMORY LANE

**The many faces of the
St Albans Cricket Club**



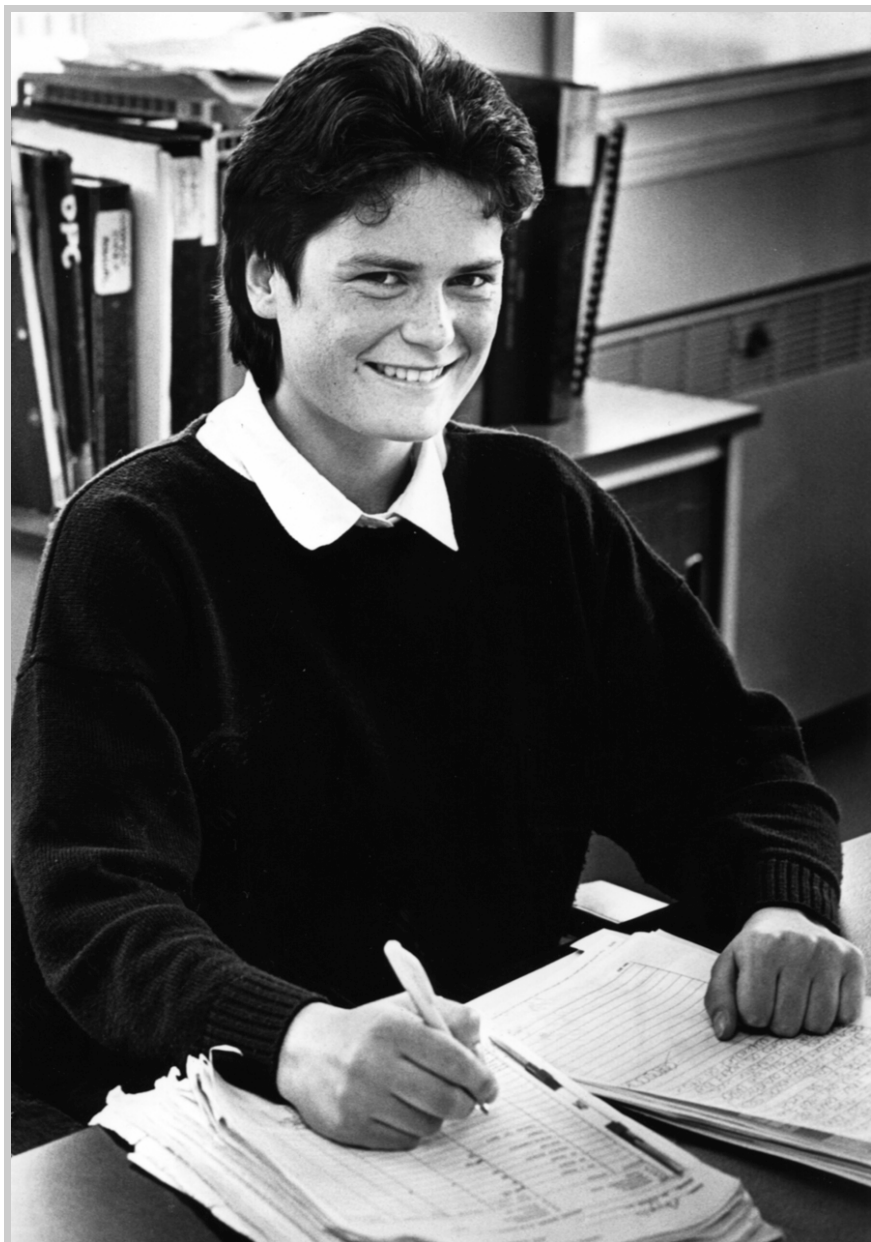
Chris Harris (New Zealand, 1990-) shows off his one-day uniform after returning from the 1990/91 World Series Cup tournament in Australia



Phyl Blackler (New Zealand, 1938-66) unpacks her cricket kit after returning from the 1954 tour of Britain



Vicki Burtt (New Zealand, 1977-82) plays through the leg side while playing for Canterbury at the 1985/86 national women's tournament



**Justine Russell (New Zealand, 1994-96) hard at work
when not playing cricket in the 1988/89 season**



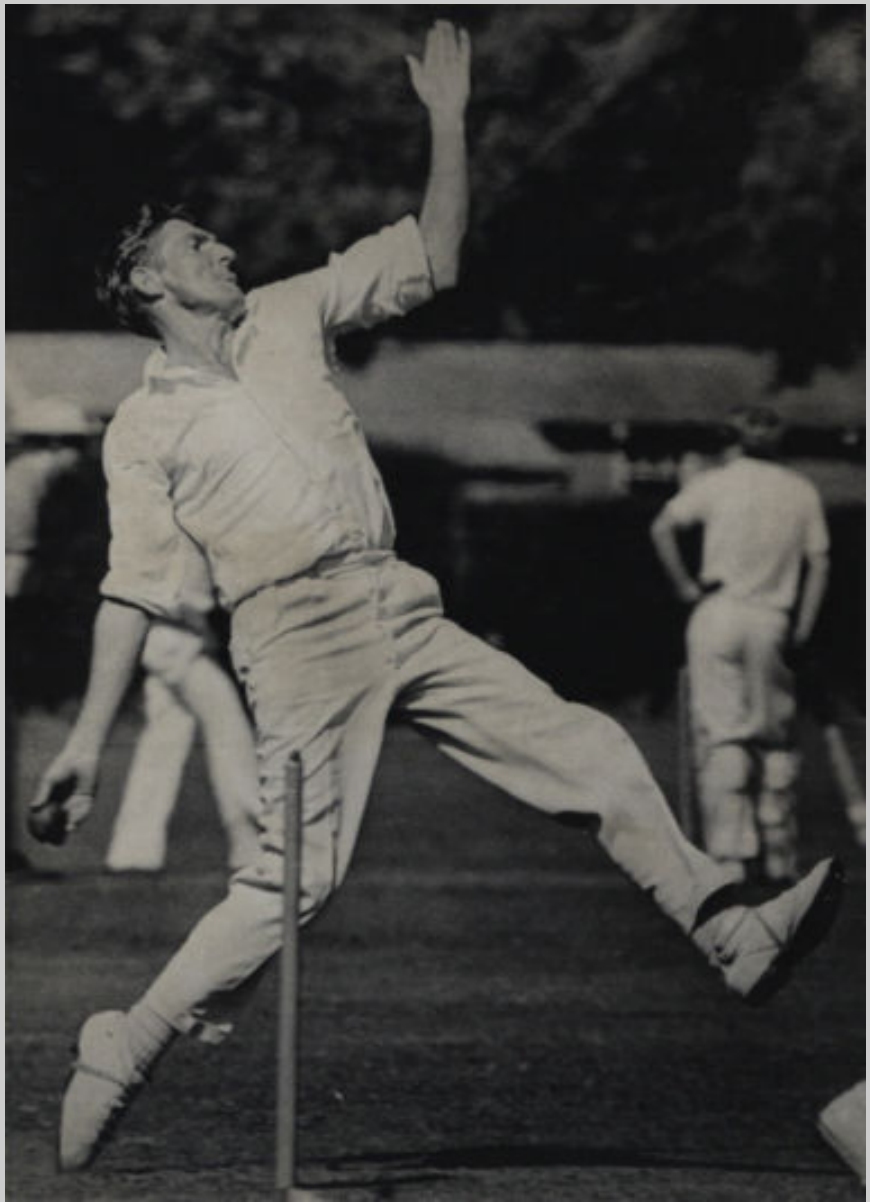
Henry Sampson (Canterbury, 1976-77) watches anxiously as he plays a risky shot while playing for Otago against Canterbury in 1974/75



Henry Richards (Canterbury, 1987-88) in the midst of a three-wicket spell for New Zealand Young Cricketers against Australia in 1986/87



Roger Ford (Canterbury, 1988-94) during a demanding spell for Canterbury against the touring Sri Lankans in 1990/91



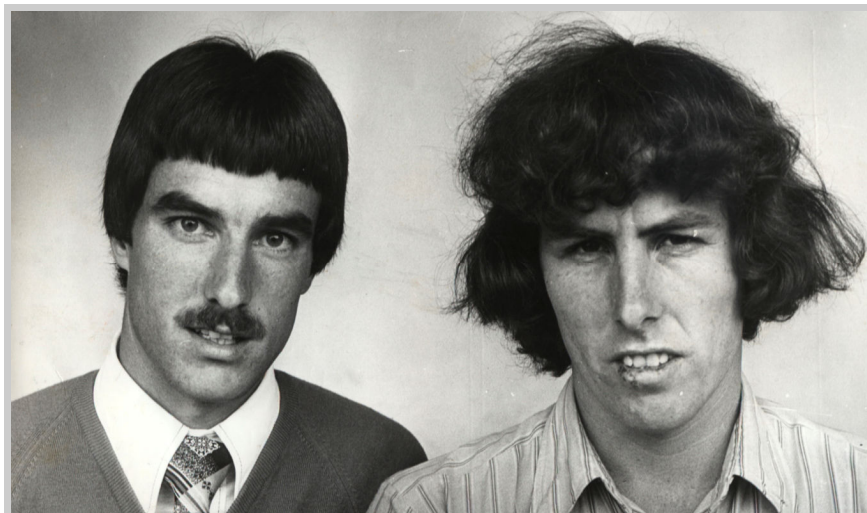
**Ken Ferries (Canterbury, 1966-75) in action
for St Albans against Riccarton in 1968/69**



John Ruston (Canterbury, 1962-63) plays a ball through the leg side during a club match in 1978/79



Wayne Burt (Canterbury, 1965-73) plays a late cut in an innings of 51 for Canterbury against the touring Australians in 1966/67



Rod Moore (St Albans, 1975-82) and Les Watson (Canterbury, 1978-79) just before they headed off to play league cricket in England in 1978



Marg Alabaster (later Francis, Canterbury, 1977-84) watches closely behind the stumps in a match against North Shore in 1974/75



**Greg Olliver (St Albans, 1985-97) defends back down the pitch
in a second grade match against Riccarton in 1984/85**



George Nicoll (St Albans, 1968-82) glances down to fine leg during an innings of 46 not out against Burnside-West University in 1974/75



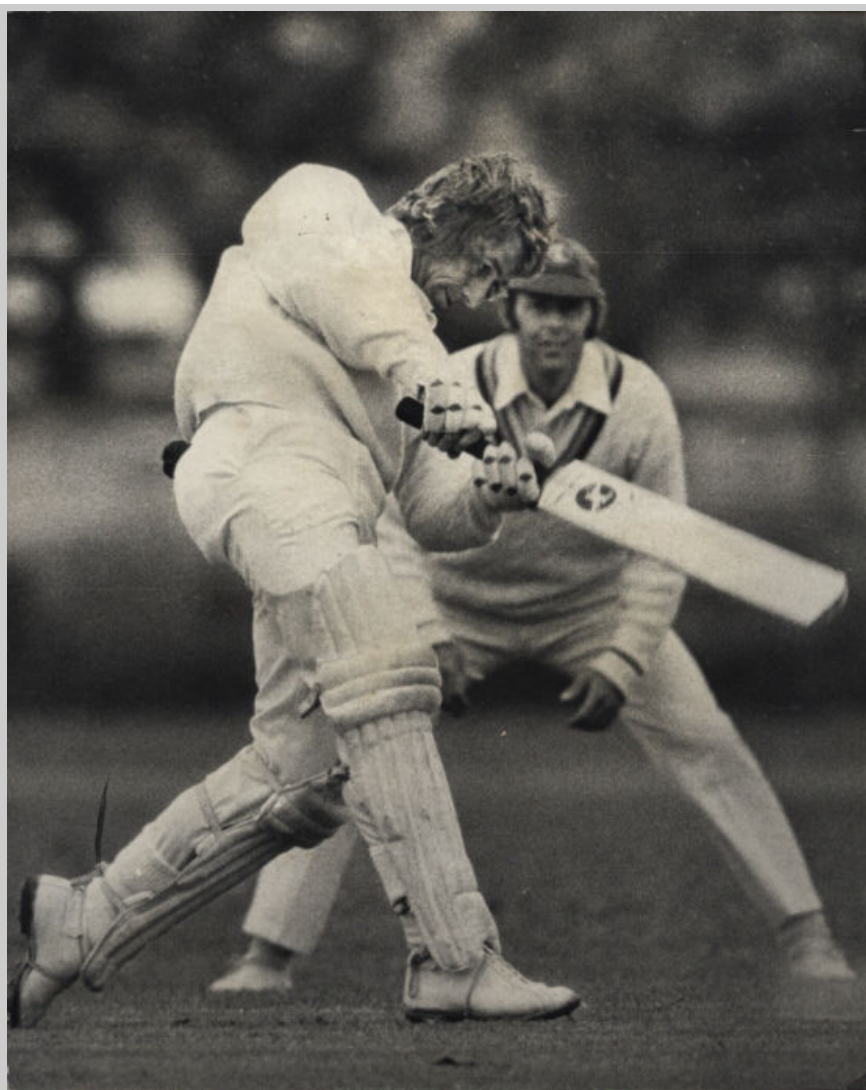
**Grant Lucas (St Albans, 1983-2000) batting
against Old Collegians in 1987/88, in one
of his St Albans record 248 appearances**



Graham Moore (St Albans, 1975-82) swings and misses during an innings of 25 against Riccarton in 1981/82



Miles Stapylton-Smith (St Albans, 1978-91)



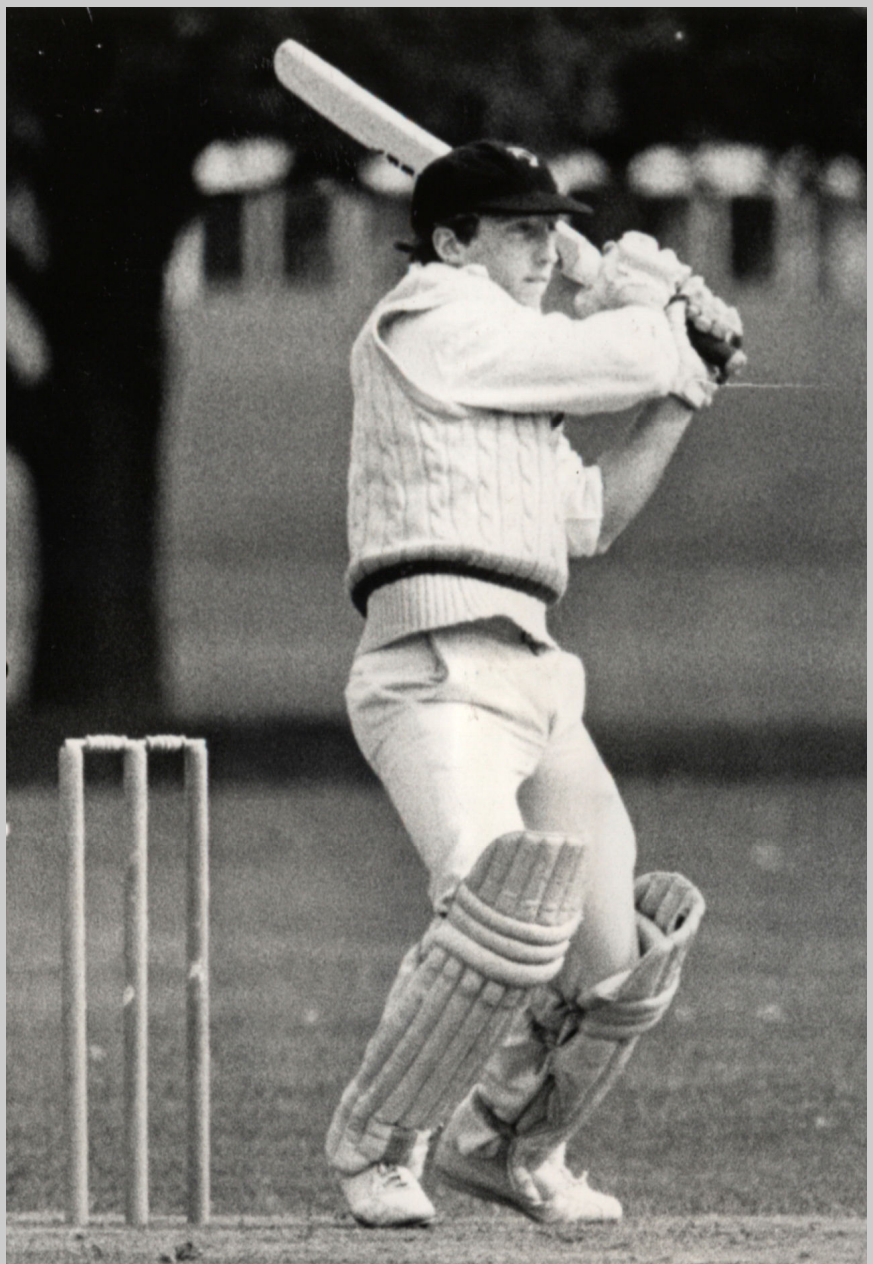
**Les Smith (St Albans, 1969-85) drives to the long-off boundary
in a match against Burnside-West University in 1974/75**



John Larter (St Albans, 1981-84) dives in an unsuccessful attempt to take a catch in a match against Riccarton in 1983/84



Trevor Jones (St Albans, 1958-66) is all concentration as he bowls during a match against East Shirley in 1964/65



Max Bremner (St Albans, 1980-96) pulls a ball in the midst of completing a century against Marist in 1984/85



**Rod Moore (St Albans, 1975-82) defends resolutely
in a match against Riccarton in 1979/80**



Gary Walklin (St Albans, 1969-78) bowling in the 1974/75 season



Trevor Jesty (Canterbury, 1979-80) in operation at the bowling crease as the club's overseas professional in 1979/80



Club members gather at Hagley Oval to play practice games on the opening day of the 1931/32 season



St Albans senior women's batsman Olive Williams keeps her eye on the ball while Ana Rouse (left), Janice Stead and Alison Malins stand at the ready in the background in 1959/60



St Albans players off to cricket practice, circa 1930s



The St Albans senior women's team, circa 1940s



Opening day fun and games in the late 1980s



Frank White (wicket-keeper) and Graham Sercombe practice in the Hagley Oval nets on the opening day of the 1981/82 season



Club members enjoy the recently refurbished pavilion in 1984



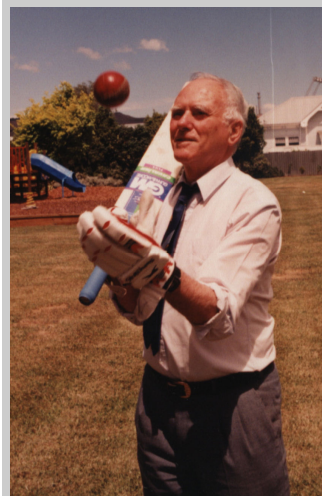
The worst storm in decades submerged Hagley Oval and forced all cricket off it for the first two weeks of the 2000/01 season



Life member and former club secretary Eleanor Horne helping out in her other role as club caterer



Current senior selector Peter Mayell watches play intently at Hagley Oval in his previous role as senior men's scorer



Former senior men's player and president Ian Dempsey - first member to play in 50 consecutive years for the club



Two of the dominant fourth/fifth grade sides from the last three decades - St Albans has won either title in 20 of the last 30 years





1975/76 club captain Alan Jamieson (left) and deputy club captain Richard Shelton with the symbol of inter-club supremacy, the Petersen Shield. St Albans have won the title 20 times despite the handicap of being one of the largest clubs.

TEAMS OF THE CENTURY

The best St Albans XIs from 1905-2005

The teams overleaf were chosen by a group of former players, club presidents, life members, cricket media and historians (30 selectors for the men's team, 20 for the women's). Each chose their top XI and a 12th man from a list of players who had made at least 75 appearances for St Albans during their careers. The selections were heavily weighted towards their club cricket performances, while keeping in mind the balance of the team. The votes were then tallied to produce these two great teams of the century. We know that both teams will generate much discussion and debate.

St Albans Men's Team of the Century

- **Tom Burt (1933/34-1958/59)**
Right-hand batsman, slow left-arm orthodox bowler
197 matches, 3998 runs at 18.95, 754 wickets at 16.43
- **Cyril Crawford (1919/20-1947/48)**
Right-hand batsman, right-arm medium bowler
223 matches, 8158 runs at 30.10, 28 wickets at 27.25
- **Ken Ferries (1963/64-1979/80)**
Right-hand batsman, right-arm fast medium bowler
149 matches, 1532 runs at 9.64, 479 wickets at 17.77
- **Sam Guillen (1956/57-1970/71)**
Right-hand batsman, right-arm medium bowler, wicket-keeper
114 matches, 4954 runs at 29.49, 70 wickets at 23.60, 188 dismissals
- **Zin Harris (1947/48-1966/67)**
Right-hand batsman, right-arm medium bowler
124 matches, 5384 runs at 28.19, 130 wickets at 20.61
- **Ted Mulcock (1935/36-1954/55)**
Right-hand batsman, right-arm medium bowler
109 matches, 684 runs at 8.88, 523 wickets at 16.32
- **Frank O'Brien (1927/28-1953/54)**
Right-hand batsman, right-arm medium bowler
237 matches, 9515 runs at 32.25, 150 wickets at 27.22
- **Matt Poore (1948/49-1965/66)**
Right-hand batsman, right-arm off break bowler
154 matches, 5224 runs at 25.12, 426 wickets at 15.33
- **Mark Priest (1979/80-1998/99)**
Left-hand batsman, slow left-arm orthodox bowler
204 matches, 5207 runs at 24.00, 528 wickets at 15.76
- **Don Sandman (1908/09-1930/31)**
Right-hand batsman, right-arm leg break googly bowler
126 matches, 3385 runs at 22.87, 737 wickets at 16.14
- **Frank Woods (1921/22-1929/30)**
Right-hand batsman, right-arm medium bowler
84 matches, 4646 runs at 39.04, 68 wickets at 23.88
- **Chris Harris (12th man, 1987/88-)**
Left-hand batsman, right-arm medium bowler
86 matches, 2971 runs at 39.61, 168 wickets at 13.58

St Albans Women's Team of the Century

- **Phyl Blackler (1938/39-1969/70)**
Right-hand batsman, right-arm leg break bowler
322 matches, 14158 runs, 1172 wickets
- **Vicki Burt (née McGregor, 1969/70-1993/94)**
Right-hand batsman, right-arm slow medium bowler
246 matches, 7908 runs at 29.84, 249 wickets at 18.60
- **Catherine Campbell (1982/83-2003/04)**
Left-hand batsman, right-arm off break bowler
120 matches, 1295 runs at 14.89, 310 wickets at 15.49
- **Kirsty Flavell (née Bond, 1981/82-2001/02)**
Right-hand batsman, right-arm medium bowler
181 matches, 5970 runs at 35.54, 174 wickets at 22.59
- **Kay Gilray (née Wilkinson, 1960/61-1991/92)**
Right-hand batsman, right-arm medium bowler
222 matches, 4320 runs at 22.86, 467 wickets at 12.50
- **Britt Hearn (née Legg, 1979/80-1992/93)**
Right-hand batsman, right-arm medium bowler
165 matches, 3538 runs at 28.53, 276 wickets at 16.04
- **Sarah Illingworth (1981/82-1995/96)**
Right-hand batsman, wicket-keeper
168 matches, 4799 runs at 30.18, 150 dismissals
- **Ann McKenna (née Colville, 1957/58-1992/93)**
Right-hand batsman, right-arm off break bowler
330 matches, 11923 runs at 39.61, 258 wickets at 14.07
- **Nicola Payne (1995/96-2002/03)**
Right-hand batsman, right-arm medium bowler
108 matches, 5222 runs at 58.67, 100 wickets at 17.14
- **Justine Russell (1991/92-1995/96)**
Right-hand batsman, right-arm medium bowler
46 matches, 806 runs at 21.21, 114 wickets at 9.81
- **Janice Stead (1956/57-1972/73)**
Right-hand batsman
98 matches, 4989 runs
- **Helen Steere (née Watson, 12th man, 1937/38-1962/63)**
Left-hand batsman
222 matches, 7111 runs

RECORDS AND STATISTICS

**St Albans Cricket Club
1905/06-2003/04**

Historical Register of the Club Executive

President:

1905-1906 A E G Rhodes
 1906-1907 H D Carter
 1907-1909 G Palmer
 1909-1923 F C Raphael
 1923-1925 R Graham
 1925-1930 J S Barrett
 1930-1946 C S Thompson
 1946-1956 C G Crawford
 1956-1959 T A Tucker
 1959-1961 T B Burt
 1961-1963 C F Collins
 1963-1966 R R McLauchlan
 1966-1969 R W Peers
 1969-1971 J Z Harris
 1971-1975 I D Dempsey
 1975-1978 R D J Mather
 1978-1980 P B Guerin
 1980- A G Jamieson

Treasurer:

1905-1906 P O'Brien
 1906-1914 J Jackman
 1914-1919 C S Thompson
 1919-1920 J Reid
 1920-1922 C S Thompson
 1922-1923 C S Harrison
 1923-1926 A Wright
 1926-1929 S W Hickmott
 1929-1930 L C Smart
 1930-1939 T R Pope
 1939-1942 T A Tucker
 1942-1944 N S H McCann
 1944-1945 J Smith
 1945-1952 J Child
 1952-1953 N S H McCann
 1953-1955 M C Stonyer
 1955-1958 R J Findlay
 1958-1959 S Heymann
 1959-1961 R D Wear
 1961-1968 B S Todd
 1968-1969 D Kelly
 1969-1971 J W Burt
 1971-1972 K J Yardley
 1972-1973 J C Thompson
 1973-1975 L R Earnley
 1975-1979 L J Blatchford
 1979-1980 K J Yardley
 1980-1982 B J Reddington
 1982-1984 G N Cowles
 1984- L N Serra

Secretary:

1905-1906 J Jackman
 1906-1908 C W Allard
 1908-1909 L G Blackwell
 1909-1913 J Reid
 1913-1915 V M Edgar
 1915-1919 C S Thompson
 1919-1920 J Reid
 1920-1921 L R Brunton
 1921-1926 C S Harrison
 1926-1930 S W Hickmott
 1930-1939 T R Pope
 1939-1942 T A Tucker
 1942-1944 N S H McCann
 1944-1945 J Smith
 1945-1946 R G Condliffe
 1946-1953 C F Collins
 1953-1955 C McKenzie
 1955-1956 R I Stark
 1956-1960 R W Peers
 1960-1961 V C B Robinson
 1961-1963 R D Wear
 1963-1965 A H Turner
 1965-1967 M R England
 1967-1971 L R Earnley
 1971-1972 R D J Mather
 1972-1973 A J Bull
 1973-1976 E P West
 1976-1979 K J Yardley
 1979-1981 A C Graves
 1981-1983 E P West
 1983-1985 G F G Gambles
 1985-1986 S Shelton
 1986-1999 E W Horne
 1999- L D Stewart

Women's Club Captain:

1972-1979 S Chamberlain
 1979-1982 V L Burt
 1982-1983 J McRobie
 1983-1984 J Sargent
 1984-1985 M Nijland
 1985-1986 T McNamara
 1986-1989 T Brownlee
 1989-1990 K E Bond
 1990-1992 L McMeeking
 1992-1995 S Day
 1995-1997 L D Stewart
 1997-1998 J Geary
 1998-2000 J K Jamieson
 2000-2002 E M Saunders
 2002- K M Houlston

Men's Club Captain:

1905-1906 T W Reese
 1906-1908 R Vincent
 1908-1909 J Reid
 1909-1912 A H Noall
 1912-1914 H Matson
 1914-1916 H A Bishop
 1916-1919 C Webster
 1919-1921 C S Thompson
 1921-1923 L R Brunton
 1923-1945 R H North
 1945-1946 C G Crawford
 1946-1948 J Smith
 1948-1950 R G Knowles
 1950-1951 R R McLauchlan
 1951-1952 M B Poore
 1952-1953 H L Langley
 1953-1955 R Kerr
 1955-1956 I D Dempsey
 1956-1961 P G Z Harris
 1961-1962 A R Taylor
 1962-1965 J Z Harris
 1965-1968 R D J Mather
 1968-1971 A L Fleete
 1971-1972 S Murdoch
 1972-1973 J A Harrison
 1973-1980 A G Jamieson
 1980-1982 R W Moore
 1982-1983 J W Durning
 1983-1985 E P West
 1985-1987 R H Shelton
 1987-1989 M J Anderson
 1989-1992 G J McCarthy
 1992-1995 G J Curgenven
 1995-1997 T Falloon
 1997-1999 C S J Cowper
 1999-2000 S T Knox
 2000-2002 I E Smith
 2002- A J Falloon

Championship Wins

Men:

First Grade:

(two-day) 1909/10, 1910/11, 1925/26, 1949/50, 1954/55, 1956/57,
1963/64, 1964/65, 1986/87, 1987/88, 1988/89, 1989/90,
1991/92, 1993/94, 2000/01, 2001/02

(one-day) 1987/88, 1991/92, 2002/03, 2003/04

(Press Knockout Cup) 1995/96, 1996/97, 2001/02

Second Grade: 1914/15, 1916/17, 1928/29, 1935/36, 1949/50, 1960/61,
1969/70, 1971/72, 1976/77, 1977/78, 1988/89, 1993/94

Third Grade: 1980/81, 1990/91

Fourth Grade: 1958/59, 1974/75, 1976/77, 1979/80, 1980/81, 1981/82,
1983/84, 1985/86, 1986/87, 1987/88, 1990/91, 1991/92,
1993/94, 1994/95, 1995/96, 1996/97, 2002/03

Cavaliers: 1993/94

Fifth Grade: 1957/58, 1981/82, 1993/94, 1994/95, 1997/98, 1999/00,
2000/01, 2001/02

Sixth Grade: 1958/59, 1976/77, 1986/87, 1988/89, 1991/92, 2003/04

Seventh Grade: 1906/07, 1914/15, 1928/29, 1953/54, 1985/86

Eighth Grade: 1993/94, 1995/96

Ninth Grade: 1910/11, 1937/38, 1947/48, 1949/50

Tenth Grade: 1953/54, 1986/87

Eleventh Grade: -

Twelfth Grade: 1934/35

President's Grade: 1956/57, 1965/66, 1970/71, 1975/76, 1997/98

Hadlee Trophy: 1954/55, 1969/70, 1988/89

Petersen Shield: 1916/17, 1953/54, 1958/59, 1960/61, 1962/63, 1964/65,
1975/76, 1977/78, 1978/79, 1980/81, 1981/82, 1982/83,
1985/86, 1986/87, 1988/89, 1991/92, 1992/93, 1993/94,
1996/97, 2003/04

Women:

First Grade:
(main competition) 1938/39, 1939/40, 1940/41, 1943/44, 1948/49, 1949/50, 1954/55, 1959/60, 1960/61, 1963/64, 1965/66, 1966/67, 1967/68, 1968/69, 1969/70, 1970/71, 1972/73, 1973/74, 1976/77, 1983/84, 1985/86, 1986/87, 1987/88, 1990/91, 1992/93, 1997/98, 1998/99, 2001/02, 2003/04

(subsidiary competition) 2000/01, 2001/02

(Press Knockout Cup) 1998/99, 1999/00, 2000/01

First Reserve Grade: 2000/01, 2001/02

Second Grade: 1986/87, 1989/90, 1995/96, 1997/98, 2003/04

Third Grade: 1941/42, 1953/54, 1957/58, 1959/60, 1976/77, 1992/93, 1994/95, 1995/96, 1996/97, 1998/99, 2002/03, 2003/04

Fourth Grade: 1995/96, 1998/99, 2001/02, 2003/04

Premier Super 8s: 1998/99

Junior Super 8s: 1998/99, 1999/00



The 1954/55 championship winning senior men's team in the club's 50th jubilee year. Front row: MB Poore, J Smith, TM Le Mesurier (captain), CG Crawford (president), TB Burt, DW Stark, GG Coull. Back row: EL Mummery, JA Rhodes, EN Penlington, E Mulcock, JP Haynes, JW Kiddey, JG Hutchison. Insets: MP O'Malley, PGZ Harris, I Burrows.

Representative Players

Men:

New Zealand (Test Matches):

1931-32	ML Page	1955-65	PGZ Harris	1992-03	CZ Harris
1946-53	TB Burt	1977-78	SL Boock	2000-04	CS Martin
1952-56	MB Poore	1989-98	MW Priest		

New Zealand (All Matches):

1909-21	DM Sandman	1946-53	TB Burt	1977-78	SL Boock
1913-14	RG Hickmott	1952-56	MB Poore	1988-98	MW Priest
1925-26	CG Crawford	1955-57	SC Guillen	1990-04	CZ Harris
1931-32	ML Page	1955-56	PGZ Harris	2000-04	CS Martin
1935-36	WE Merritt	1966-67	BR Taylor		

Canterbury:

1887-18	TW Reese	1934-37	M Graham	1977-79	GB Smith
1900-12	KM Ollivier	1935-36	WE Merritt	1978-79	LT Watson
1905-15	HA Bishop	1936-39	E Mulcock	1979-80	TE Jesty
1907-11	EE Crawshaw	1937-49	RC Webb	1982-90	PD Rutledge
1907-08	CA Cuff	1940-41	RH Scott	1982-83	J Gully
1907-19	BB Wood	1943-46	J Smith	1984-99	MW Priest
1909-27	DM Sandman	1943-55	TB Burt	1987-88	MC Bremner
1911-15	RG Hickmott	1949-51	W Bell	1987-88	HMR Richards
1913-14	JS Barrett	1949-64	PGZ Harris	1988-94	RM Ford
1913-26	LR Brunton	1950-62	MB Poore	1988-95	BZ Harris
1916-21	DW Reese	1953-54	DW Stark	1989-04	CZ Harris
1917-18	JC Hay	1954-62	GG Coull	1995-00	CD Cumming
1917-19	L Gordon	1956-61	SC Guillen	1997-04	CS Martin
1920-21	CW Allard	1962-63	JM Ruston	1998-04	SJ Cunis
1920-32	CG Crawford	1965-73	JW Burt	1998-99	GA Howell
1921-27	F Woods	1966-67	BR Taylor	1999-03	JI Englefield
1921-27	AW Thomas	1966-75	KI Ferries	2000-01	JS Ward
1927-31	N Dorreen	1972-73	MG Webb	2001-02	DJ Reekers
1930-37	ML Page	1975-77	SL Boock		
1932-46	FP O'Brien	1976-77	HC Sampson		

Women:

New Zealand:

1938-66	P Blackler	1978-79	SA Harris	1999-00	HM Watson
1966-72	JE Stead	1986-90	BJ Legg	2002-04	SK Burke
1968-87	A McKenna	1988-96	KE Bond	2003-04	AJ Green
1973-75	J Lord	1988-96	SL Illingworth	2003-04	BH McNeill
1975-76	DA Jelley	1988-01	CA Campbell	2003-04	AL Mason
1975-77	SJ Rattray	1994-95	JA Russell		
1977-82	VL McGregor	1999-03	N Payne		

Canterbury:

1968-79	SJ Rattray	1986-96	SL Illingworth	1999-00	HM Watson
1968-84	KL Gilray	1990-91	SH Brown	1999-04	HJ Rae
1977-81	DA McGregor	1994-96	JA Russell	2000-04	SK Burke
1977-84	MA Francis	1995-03	N Payne	2001-04	BH McNeill
1977-87	VL McGregor	1996-00	SM Frahm	2001-02	EA Travers
1979-89	A McKenna	1997-98	JL Geary	2002-03	KA Craig
1981-84	KA Hadlee	1997-98	S Burrows	2002-04	RC Milburn
1982-92	BJ Legg	1998-99	CJ Moffat	2003-04	RS Kelly
1983-00	CA Campbell	1998-02	AJMD Marsh	2003-04	AE Satterthwaite
1985-96	KE Bond	1998-01	JA Lawler		

Otago:

1998-00	JL Geary	2000-01	KA Craig	2002-03	EJ Scurr
1999-00	BH McNeill	2001-02	PJ te Beest		

The following played representative cricket prior to the amalgamation of the St Albans Men's and St Albans Women's Cricket Clubs in July 1977:

Canterbury:

T Baker	SA Harris	J Lord	A Nuttall	HM Steere
P Blackler	P Hill	E Luckett	K Pyatt	B Turner
P Carr	P Hooper	D McRae	C Randle	S Vaughan
C Dallard	P Jarvis	A Malins	J Riordan	J Watson
J Dickinson	P Kennedy	S Masters	LJ Shankland	J Webster
J Hamilton	J Lawn	S Mountford	JE Stead	E Woods

Trophies

Player of the Year:

1980/81	AJ Nuttall	1988/89	MJ Anderson	1996/97	N Payne
1981/82	VL Burt	1989/90	LC Sparks	1997/98	JA Lawler
1982/83	P Glassey	1990/91	S Parker	1998/99	N Payne
1983/84	BJ Legg	1991/92	BZ Harris	1999/00	SA Mason
1984/85	PD Rutledge	1992/93	KE Bond	2000/01	JI Englefield
1985/86	MW Priest	1993/94	GM Olliver	2001/02	AC Denford
1986/87	A McKenna	1994/95	C Julian	2002/03	C Moffat
1987/88	BZ Harris	1995/96	SM Frahm	2003/04	AC Bailey

Cyril Crawford Memorial Cup (most runs in any grade):

1984/85	AC Graves	603	1994/95	J Wadsworth	745
1985/86	SN McGregor	734	1995/96	PS Gooby	811
1986/87	BS Davidson	516	1996/97	N Payne	883
1987/88	BZ Harris	1040	1997/98	JA Lawler	872
1988/89	J Stribling	770	1998/99	N Payne	794
1989/90	C Williams	740	1999/00	T Breese	585
1990/91	S Parker	973	2000/01	ST Knox	666
1991/92	BZ Harris	763	2001/02	M Sutherland	835
1992/93	KB Scott	857	2002/03	M Sutherland	912
1993/94	GM Olliver	808	2003/04	ST Knox	754

Frank O'Brien Memorial Cup (most runs in one grade):

1984/85	AC Graves	603	1994/95	J Wadsworth	745
1985/86	SN McGregor	734	1995/96	PS Gooby	811
1986/87	BS Davidson	516	1996/97	N Payne	883
1987/88	SN McGregor	891	1997/98	JAF Davidson	670
1988/89	J Stribling	770	1998/99	N Payne	458
1989/90	SN McGregor	583	1999/00	T Breese	585
1990/91	S Parker	973	2000/01	ST Knox	666
1991/92	KB Scott	750	2001/02	M Sutherland	835
1992/93	KB Scott	819	2002/03	M Sutherland	879
1993/94	R Kennedy	773	2003/04	ST Knox	754

Don Sandman Memorial Cup (most wickets in any grade):

1991/92	R Brown	59	1998/99	JS Ward	47
1992/93	R Brown	58	1999/00	R Brown	53
1993/94	RM Ford	48	2000/01	SA Mason	48
1994/95	T Wilson	57	2001/02	AG Jamieson	44
1995/96	CSJ Cowper	41	2002/03	J Guest	54
1996/97	N Culpan	49	2003/04	AC Bailey	42
1997/98	CS Martin	47			

Tom Burt Memorial Cup (most wickets in one grade):

1964/65	F McWatt	47	1985/86	W Donald &	43
1965/66	P Napier	39		P Malone	
1966/67	J Cowper	41	1986/87	D Hutton	51
1967/68	P Napier	41	1987/88	BA Holland	59
1968/69	A Brand	61	1988/89	MJ Anderson	60
1969/70	R Harris	43	1989/90	LC Sparks	51
1970/71	AG Jamieson	49	1990/91	R Thomas	55
1971/72	R Winter	36	1991/92	SA Mason	58
1972/73	H Shepherd	47	1992/93	R Brown	58
1973/74	R Grainger	50	1993/94	RM Ford	48
1974/75	not awarded		1994/95	T Wilson	57
1975/76	not awarded		1995/96	CSJ Cowper	41
1976/77	not awarded		1996/97	R Brown	40
1977/78	not awarded		1997/98	LT Watson	41
1978/79	not awarded		1998/99	B Rodger	40
1979/80	not awarded		1999/00	R Brown	53
1980/81	W Donald	39	2000/01	SA Mason	48
1981/82	AG Jamieson	56	2001/02	AG Jamieson	44
1982/83	P Glassey	50	2002/03	J Guest	49
1983/84	W Donald	36	2003/04	AC Bailey	42
1984/85	H McKnight	64			

Bob Webb Memorial Cup (most wicket-keeping dismissals in one grade):

1988/89	G Lamb	37	1996/97	GA Howell	22
1989/90	TF Thornton	25	1997/98	DF Shackel	28
1990/91	J Horne	26	1998/99	T Holton	29
1991/92	JB Mooar	29	1999/00	GJ Curgenvin	25
1992/93	GJ Curgenvin	30	2000/01	AM Keoghan	30
1993/94	JB Mooar	32	2001/02	AF Johnstone	29
1994/95	J Overend	30	2002/03	AF Johnstone	37
1995/96	AJ Logie	30	2003/04	AF Johnstone	36

Most Improved Player of the Year:

	men	women		men	women
1982/83	A Arnold	T Arahanga	1993/94	JS Ward	S Burrows
1983/84	GR Lucas	CA Campbell	1994/95	MW Fine	L Walker
1984/85	BZ Harris	J Beattie	1995/96	not awarded	J Durdin
1985/86	RM Ford	JA Turner	1996/97	JS Ward	CJ Moffat
1986/87	GM Olliver	T McNamara	1997/98	GN Brooks	M Carmont
1987/88	GR Lucas	M Ormandy	1998/99	JAF Davidson	BH McNeill
1988/89	GM Rae	M Ormandy	1999/00	T Breese	SK Burke
1989/90	NS Tikao	SM Frahm	2000/01	BA Smith	SK Burke
1990/91	AF Rolfe	M Ormandy	2001/02	AC Bailey	KA Craig
1991/92	JB Mooar	A Morris	2002/03	B Glover	K Goodacre
1992/93	KB Scott	SM Frahm	2003/04	R Davidson	RC Milburn

Most Promising Player of the Year:

	men	women		men	women
1983/84	RM Ford	KE Bond	1994/95	GA Howell	KA Craig
1984/85	A Dyer	JA Turner	1995/96	RF Roberts	KA Craig
1985/86	AM McDonald	DK Brownlee	1996/97	GN Brooks	N Glubb
1986/87	PS Gooby	L McDruy	1997/98	AC Denford	HJ Rae
1987/88	HMR Richards	J Weir	1998/99	M Gower	BH McNeill
1988/89	C Cotton	J Weir	1999/00	MPF Davidson	HJ Rae
1989/90	RM Graham	C McCormack	2000/01	ALL MacLeod	K Saunders
1990/91	DI Culpan	C McCormack	2001/02	AF Johnstone	RS Kelly
1991/92	ME Graham	not awarded	2002/03	B Glover	A Dickie
1992/93	MW Fine	not awarded	2003/04	DM Anderson	K McDonald
1993/94	CS Martin	M Carson			

Personality of the Year:

1980/81	M Ostle	1988/89	S Inwood	1996/97	N Payne
1981/82	SL Illingworth	1989/90	KI Ferries	1997/98	GR Lucas
1982/83	J Gully	1990/91	M Vaughan	1998/99	MR Ogier
1983/84	E Shepard	1991/92	GE Charles	1999/00	PB McGrory
1984/85	BZ Harris	1992/93	L Borrani	2000/01	B Moore
1985/86	B O'Malley	1993/94	C Julian	2001/02	C Atkinson
1986/87	F Kemp	1994/95	CD Cumming	2002/03	AC Bailey
1987/88	HMR Richards	1995/96	R Thomas	2003/04	ST Knox

Noel Love Memorial Trophy (for the older St Albans member who shows outstanding enthusiasm, dedication, camaraderie and social interaction, both on and off the field):

2003/04 D Mollett

Peers Cup (club member contributing most on and off the field):

1968/69	R Johnson	1980/81	RW Moore	1992/93	EW Horne
1969/70	ID Dempsey	1981/82	TF Thornton	1993/94	PJ Mayell
1970/71	LR Earney	1982/83	EP West	1994/95	LN Serra
1971/72	RDJ Mather	1983/84	EP West	1995/96	JK Jamieson
1972/73	AG Jamieson	1984/85	LN Serra	1996/97	AG Jamieson
1973/74	JA Harrison	1985/86	SJD Cox	1997/98	GR Lucas
1974/75	B Williamson	1986/87	MJ Anderson	1998/99	JK Jamieson
1975/76	LJ Blatchford & SJD Cox	1987/88	B O'Malley & V Pont	1999/00	GJ Curgenvan
1976/77	H Hiscoke	1988/89	EP West	2000/01	EM Saunders
1977/78	AG Jamieson	1989/90	T Falloon	2001/02	EM Saunders
1978/79	C Francis	1990/91	GJ Curgenvan	2002/03	SA Mason
1979/80	MA Alabaster	1991/92	GJ Curgenvan	2003/04	GAH Craigie & DE Pettet

St Albans Cricket Club Cup (awarded annually to the most improved juniors):

Papanui High School:

1973	R Wesney	1983	AR Caddick	1992	J Wilson	2002	S Coffey & D Trenberth
1974	D Newburn	1984	not awarded	1993	T Mead		
1975	MW Priest	1985	not awarded	1994	R Norrish	2003	S Coffey
1976	D Young	1986	not awarded	1995	G Whitley		
1977	G Rees	1987	not awarded	1996	R Norrish		
1978	M Ambrose	1988	not awarded	1997	A Smith		
1979	MR Fullen	1989	not awarded	1998	A Falloon		
1980	G Thomson	1990	B Williams & SE Bond	1999	S Lester		
1981	A Smith			2000	B Glover		
1982	BJ Harrison	1991	C Wilson	2001	B Glover		

Mairehau High School:

1974	R Ettema	1983	G Hall & A Larney	1989	P Hilton	1997	K Truscott
1975	P Welsh			1990	P Hilton	1998	not awarded
1976	M Stone	1984	M Taylor & B McMurdo	1991	B Maitland & A Day	1999	F Khan
1977	W Aymer					2000	W Taliau
1978	B Daken	1985	D Lacey	1992	SJ Pawson	2001	not awarded
1979	G Banks	1986	C Dyer	1993	D Mutton	2002	not awarded
1980	T Conway	1987	P Hilton	1994	M Ford	2003	not awarded
1981	J Wolfrey	1988	S Lawson & R McLean	1995	not awarded		
1982	D Marsden			1996	M Davis		

St Bede's College:

1975	P Burke	1983	S McCloy	1991	C Isherwood	1999	A Robertson
1976	SP Kane	1984	C Forsyth	1992	S Hearsey	2000	not awarded
1977	PD White	1985	L Lawson	1993	T Murphy	2001	M Newall
1978	WD Kilworth	1986	A Ferris	1994	S Flanagan	2002	T Muir
1979	DR Halligan	1987	A Shannon	1995	M Henderson	2003	I King
1980	AJ Houston	1988	J O'Malley	1996	J Coll		
1981	MA Stone	1989	MF Dwyer	1997	SL Stewart		
1982	JP Preston	1990	M Clifford	1998	AF Johnstone		

Hillmorton High School:

1989	MR Loose	1993	P Robinson	1997	D McGrath	2001	not awarded
1990	B Stapleton	1994	S McOscar	1998	not awarded	2002	not awarded
1991	E Campion	1995	B Dreaver	1999	not awarded	2003	not awarded
1992	B Miller	1996	B Dreaver	2000	J Calderwood		

Rangi Ruru Girls' School:

1998	SK Burke	2000	R Shuker	2002	A Baronian
1999	SK Burke	2001	A Baronian	2003	A Baronian

St Margaret's College:

1998	HJ Rae	2000	AE Satterthwaite	2002	AE Satterthwaite
1999	HJ Rae	2001	AE Satterthwaite	2003	AE Satterthwaite

Christchurch Girls' High School:

1999	E Kelly	2001	N Fraser	2003	F Paton
2000	N Fraser	2002	RS Kelly		

First Grade Men's Career Averages (minimum: 25 matches)

Career	Mat	Inn	NO	HS	Runs	Ave	100	50	Ct	St	B	M	R	W	Ave	SR	Econ	
AC Bailey	1998/99-2003/04	47	62	7	165	1334	24.25	1	5	27	-	1763	42	961	58	16.57	30.4	3.27
AN Bailey	1957/58-1966/67	58	82	16	77*	1344	20.36	-	5	47	4	6	0	3	0	-	-	3.00
JS Barrett	1905/06-1916/17	73	110	6	87	1829	17.59	-	8	26	14	204	4	163	2	81.50	102.0	4.79
EG Batstone	1936/37-1946/47	50	68	1	95	1120	16.72	-	4	7	-	24	0	30	2	15.00	12.0	7.50
T Birch	1933/34-1947/48	41	60	5	97	1243	22.60	-	5	20	-	90	1	96	0	-	-	6.40
HA Bishop	1908/09-1915/16	68	105	7	178	3439	35.09	5	18	48	-	798	8	588	29	20.28	27.5	4.42
SL Boock	1974/75-1977/78	27	27	7	76	320	16.00	-	1	21	-	4796	118	1718	103	16.68	46.6	2.15
MC Bremner	1980/81-1995/96	138	194	22	119	4265	24.80	4	20	109	6	493	13	307	11	27.91	44.8	3.74
GR Bromley	1997/98-1998/99	28	39	5	95*	594	17.47	-	2	15	-	-	-	-	-	-	-	-
GN Brooks	1997/98-1999/00	42	48	4	89*	774	17.59	-	3	19	1	18	0	19	1	19.00	18.0	6.33
LR Brunton	1910/11-1926/27	113	168	13	90	3312	21.37	-	11	93	72	591	4	627	25	25.08	23.6	6.37
JW Burt	1962/63-1972/73	99	165	19	116*	4241	29.05	4	29	50	-	7786	193	4249	183	23.22	42.5	3.27
MM Burt	1972/73-1986/87	78	114	12	119	2247	22.03	2	11	41	-	1435	34	917	33	27.79	43.5	3.83
TB Burt	1933/34-1958/59	197	250	39	104*	3998	18.95	1	15	70	-	26732	1167	12389	754	16.43	35.5	2.78
RJ Cain	1988/89-1994/95	66	90	13	94	2062	26.78	-	10	51	10	-	-	-	-	-	-	-
GE Charles	1991/92-1999/00	92	103	13	90	2506	27.84	-	19	25	-	6475	214	3350	170	19.71	38.1	3.10
G Condiffe	1930/31-1933/34	34	51	1	114	1439	28.78	1	6	15	-	18	0	23	2	11.50	9.0	7.67
GG Coull	1946/47-1958/59	59	86	9	109*	1704	22.13	2	9	28	-	3011	165	1184	47	25.19	64.1	2.36
CG Crawford	1919/20-1947/48	223	302	31	159*	8158	30.10	10	44	94	-	939	9	763	28	27.25	33.5	4.88
DI Culpan	1990/91-1995/96	60	76	8	66	1356	19.94	-	4	29	-	18	0	8	0	-	-	2.67
CD Cumming	1994/95-1999/00	59	78	4	134	2152	29.08	1	14	42	-	2781	96	1391	61	22.80	45.6	3.00
SJ Cunis	1998/99-2003/04	64	68	13	84	1300	23.64	-	6	20	-	5557	261	2378	193	12.32	28.8	2.57
WFC Dalley	1932/33-1936/37	39	55	6	123	1715	35.00	2	12	16	-	1026	30	679	20	33.95	51.3	3.97
JAF Davidson	1997/98-2002/03	73	80	16	63*	1576	24.63	-	9	28	-	6	0	2	1	2.00	6.0	2.00
MPF Davidson	1999/00-2003/04	59	59	9	78	925	18.50	-	3	15	-	3318	82	2025	104	19.47	31.9	3.66
ID Dempsey	1952/53-1964/65	31	43	2	44*	491	11.98	-	-	10	-	90	3	61	1	61.00	90.0	4.07
N Dorreen	1924/25-1930/31	61	79	10	226*	2134	30.93	3	8	70	24	185	3	133	8	16.63	23.1	4.31
JT Englefield	1999/00-2002/03	48	60	6	156*	2009	37.20	5	9	26	-	156	2	94	3	31.33	52.0	3.62
C Falloon	1926/27-1930/31	47	64	5	82*	1362	23.08	-	6	15	-	762	19	490	15	32.67	50.8	3.86
PM Fazakarley	1967/68-1971/72	32	41	18	23	148	6.43	-	-	10	-	3482	66	1626	77	21.12	45.2	2.80

Career	Mat	Inn	NO	HS	Runs	Ave	100	50	Ct	St	B	M	R	W	Ave	SR	Econ
1963/64-1979/80	149	190	31	41	1532	9.64	-	-	73	-	22077	904	8514	479	17.77	46.1	2.31
1992/93-1996/97	63	74	10	66	1132	17.69	-	5	33	-	3640	94	2040	110	18.55	33.1	3.36
1991/92-1993/94	42	55	2	59	862	16.26	-	5	29	1	5	0	5	1	5.00	5.0	6.00
2000/01-2002/03	26	23	4	62*	286	15.05	-	2	6	-	972	31	457	29	15.76	33.5	2.82
1983/84-1993/94	141	83	28	37	590	10.73	-	-	61	-	12718	550	5743	298	19.27	42.7	2.71
1974/75-1990/91	166	200	51	84	3127	20.99	-	10	100	-	10104	356	4895	271	18.06	37.3	2.91
1925/26-1933/34	45	58	13	53	670	14.89	-	1	24	-	3532	124	1577	72	21.90	49.1	2.68
1990/91-1996/97	91	120	17	91	1775	17.23	-	4	47	-	90	1	70	1	70.00	90.0	4.67
1984/85-1994/95	29	21	5	25	171	10.69	-	-	5	-	1328	26	757	36	21.03	36.9	3.42
1995/96-2003/04	102	78	26	51	635	12.21	-	1	30	-	6808	225	3370	184	18.32	37.0	2.97
1956/57-1970/71	114	184	16	173	4954	29.49	5	22	148	40	4031	222	1652	70	23.60	57.6	2.46
1983/84-1997/98	151	213	28	165	6427	34.74	4	44	95	-	2695	89	1370	74	18.51	36.4	3.05
1987/88-2003/04	86	106	31	170*	2971	39.61	6	11	50	-	5486	242	2281	168	13.58	32.7	2.49
1951/52-1963/64	26	43	5	68	611	16.08	-	2	14	-	-	-	-	-	-	-	-
1947/48-1966/67	124	202	11	141	5384	28.19	6	29	70	-	6696	339	2679	130	20.61	51.5	2.40
1986/87-1992/93	65	33	23	38*	134	13.40	-	-	22	-	4461	129	2532	100	25.32	44.6	3.41
1963/64-1979/80	123	146	58	43*	1379	15.67	-	-	86	-	14139	435	5641	303	18.62	46.7	2.39
1995/96-1998/99	53	62	3	87	1024	17.36	-	8	80	18	-	-	-	-	-	-	-
1952/53-1960/61	63	89	8	62	1335	16.48	-	4	63	-	42	1	22	1	22.00	42.0	3.14
2001/02-2003/04	47	26	11	23*	223	14.87	-	-	90	11	-	-	-	-	-	-	-
1958/59-1965/66	72	90	17	69	740	10.14	-	1	23	-	13146	603	5154	294	17.53	44.7	2.35
1969/70-1979/80	74	122	6	136	2399	20.68	2	10	67	-	36	0	17	0	-	-	2.83
1969/70-1975/76	42	63	10	84	1079	20.36	-	5	19	-	489	4	306	8	38.25	61.1	3.75
1947/48-1955/56	29	41	7	92	752	22.12	-	4	25	-	2405	108	999	42	23.79	57.3	2.49
1998/99-2003/04	80	101	20	102*	3050	37.65	2	22	69	-	360	6	284	10	28.40	36.0	4.73
1968/69-1971/72	26	43	5	88	706	18.58	-	2	14	-	15	0	9	1	9.00	15.0	3.60
1981/82-1983/84	39	56	7	128*	1490	30.41	1	7	19	-	1290	65	556	20	27.80	64.5	2.59
1927/28-1937/38	94	101	32	35	613	8.88	-	-	35	-	9370	238	5643	206	27.39	45.5	3.61
1983/84-1999/00	248	325	43	103*	6872	24.37	2	29	103	-	30	0	48	1	48.00	30.0	9.60
1999/00-2003/04	42	31	8	84	249	10.83	-	1	12	-	1273	25	942	31	30.39	41.1	4.44

First Grade Men's Career Averages (continued)

	Career	Mat	Inn	NO	HS	Runs	Ave	100	50	Ct	St	B	M	R	W	Ave	SR	Econ
CS Martin	1993/94-2003/04	95	51	25	10	115	4.42	-	-	17	-	7913	282	3522	225	15.65	35.2	2.67
P Martin	1916/17-1929/30	58	77	9	74	1405	20.66	-	8	23	-	1781	39	1185	51	23.24	34.9	3.99
NSH McCann	1939/40-1950/51	89	153	6	103	3032	20.63	2	11	42	3	1358	38	856	28	30.57	48.5	3.78
GW McKenzie	1947/48-1951/52	25	40	2	115	893	23.50	1	4	8	-	-	-	-	-	-	-	-
RR McLaughlan	1945/46-1952/53	32	47	4	90	866	20.14	-	3	19	-	147	8	67	6	11.17	24.5	2.73
J McMaster	1944/45-1950/51	46	46	14	35*	290	9.06	-	-	14	-	9795	352	3096	156	19.85	62.8	1.90
RM McNally	1975/76-1985/86	59	62	17	42	461	10.24	-	-	20	-	5340	188	2551	125	20.41	42.7	2.87
JA Mills	1960/61-1969/70	77	131	9	108	2565	21.02	2	7	39	-	178	8	101	1	101.00	178.0	3.40
GR Moore	1975/76-1981/82	31	48	4	50*	656	14.91	-	1	17	-	226	10	74	7	10.57	32.3	1.96
RW Moore	1975/76-1981/82	57	98	9	75	1681	18.89	-	5	35	-	18	0	4	0	-	-	1.33
E Mulcock	1935/36-1954/55	109	124	47	37*	684	8.88	-	-	31	-	20200	638	8536	523	16.32	38.6	2.54
PF Nelson	1936/37-1945/46	65	92	5	67	1421	16.33	-	3	29	-	96	0	59	3	19.67	32.0	3.69
GB Nicoll	1968/69-1981/82	90	148	10	121	2897	20.99	2	13	56	-	8	0	6	0	-	-	4.50
RH North	1920/21-1928/29	57	83	12	75*	1385	19.51	-	8	16	-	244	3	267	14	19.07	17.4	6.57
AJ Nuttall	1980/81-2001/02	213	221	75	63*	2547	17.45	-	2	117	-	26849	1565	9869	609	16.21	44.1	2.21
FP O'Brien	1927/28-1953/54	237	322	27	215*	9515	32.25	13	50	98	-	7147	192	4083	150	27.22	47.6	3.43
MP O'Malley	1951/52-1954/55	35	35	16	34	238	12.53	-	-	14	-	4367	160	1918	92	20.85	47.5	2.64
GM Oliver	1985/86-1997/98	106	124	9	126	1841	16.01	1	6	31	-	6	0	8	0	-	-	8.00
EN Penlington	1945/46-1960/61	57	78	6	91	1283	17.82	-	4	25	7	6	0	2	0	-	-	2.00
MB Poore	1948/49-1965/66	154	233	25	159	5224	25.12	5	21	49	-	18439	1085	6529	426	15.33	43.3	2.12
RN Preston	1998/99-1999/00	32	38	7	109	625	20.16	1	3	32	4	6	0	7	0	-	-	7.00
MW Priest	1979/80-1998/99	204	256	39	133	5207	24.00	3	25	135	-	19121	1102	8320	528	15.76	36.2	2.61
J Pugh	1950/51-1953/54	29	33	10	57	209	9.09	-	1	8	-	2675	79	1200	51	23.53	52.5	2.69
DW Reese	1917/18-1926/27	46	68	7	132	1482	24.30	2	4	15	-	2155	47	1476	56	26.36	38.5	4.11
TW Reese	1905/06-1918/19	114	165	20	133	3537	24.39	4	14	47	-	1785	32	1271	54	23.54	33.1	4.27
HMR Richards	1987/88-1993/94	33	20	7	27	110	8.46	-	-	11	-	3159	117	1684	83	20.29	38.1	3.20
AF Rolfe	1990/91-1992/93	37	47	6	89	1062	25.90	-	9	12	-	6	0	14	1	14.00	6.0	14.00
JM Ruston	1958/59-1972/73	149	234	11	101	5784	25.94	1	28	107	8	803	18	426	16	26.63	50.2	3.18
PD Rutledge	1980/81-1998/99	228	208	61	69	2215	15.07	-	5	308	105	6	0	3	0	-	-	3.00
HC Sampson	1976/77-1978/79	31	53	2	85*	1216	23.84	-	7	29	11	-	-	-	-	-	-	-

	Career	Mat	Inn	NO	HS	Runs	Ave	100	50	Ct	St	B	M	R	W	Ave	SR	Econ
KJ Samson	1964/65-1973/74	45	70	6	78	898	14.03	-	2	25	-	20	0	13	0	-	-	3.90
DM Sandman	1908/09-1930/31	126	175	27	131*	3385	22.87	3	13	56	-	18676	336	11893	737	16.14	25.3	3.82
BA Smith	2000/01-2003/04	39	21	13	18*	119	14.88	-	-	10	-	2061	67	1196	55	21.75	37.5	3.48
GB Smith	1970/71-1990/91	223	340	25	128	7924	25.16	4	41	161	-	246	7	215	6	35.83	41.0	5.24
J Smith	1938/39-1957/58	153	281	26	145	7720	30.27	11	36	66	-	3138	82	1493	76	19.64	41.3	2.85
LA Smith	1969/70-1984/85	150	251	16	111	5265	22.40	3	24	130	17	12	0	10	0	-	-	5.00
V Smith	1946/47-1951/52	42	58	10	78*	728	15.17	-	2	38	-	1689	70	757	26	29.12	65.0	2.69
LC Sparks	1972/73-1989/90	109	125	32	114	1628	17.51	1	3	50	-	12746	593	5787	301	19.23	42.3	2.72
MM Stapylton-Smith	1978/79-1990/91	28	25	6	39	96	5.05	-	-	15	-	3534	144	1566	61	25.67	57.9	2.66
DW Stark	1948/49-1957/58	70	93	11	90	1213	14.79	-	5	22	-	5508	141	2894	117	24.74	47.1	3.15
AR Taylor	1958/59-1964/65	51	69	23	87	879	19.11	-	2	20	-	5529	260	2458	135	18.21	41.0	2.67
AW Thomas	1921/22-1930/31	82	100	19	100*	1421	17.54	1	2	27	-	11250	413	5012	265	18.91	42.5	2.67
JC Thompson	1967/68-1982/83	82	94	27	55	900	13.43	-	1	129	30	-	-	-	-	-	-	-
NG Tubb	2000/01-2003/04	55	68	5	58	855	13.57	-	1	16	-	1597	43	1048	41	25.56	39.0	3.94
TA Tucker	1932/33-1941/42	64	65	18	29*	187	3.98	-	-	25	-	6048	169	3464	132	26.24	45.8	3.44
GJ Walklin	1969/70-1977/78	46	49	20	44	287	9.90	-	-	18	-	4952	99	2390	121	19.75	40.9	2.90
JS Ward	1993/94-2003/04	121	107	32	55*	1338	17.84	-	1	68	-	9268	396	4545	252	18.04	36.8	2.94
LT Watson	1975/76-1986/87	111	86	31	48	521	9.47	-	-	60	-	15264	692	6379	356	17.92	42.9	2.51
RC Webb	1935/36-1949/50	59	80	7	98	1670	22.88	-	7	57	41	-	-	-	-	-	-	-
BB Wood	1906/07-1910/11	33	51	3	201	1645	34.27	3	7	11	-	234	3	223	10	22.30	23.4	5.72
F Woods	1921/22-1929/30	84	127	8	234	4646	39.04	10	21	40	16	2952	111	1624	68	23.88	43.4	3.30

First Grade Women's Career Averages (minimum: 25 matches)

	Career	Mat	Inn	NO	HS	Runs	Ave	100	50	Ct	St	B	M	R	W	Ave	SR	Econ
J Beattie	1980/81-1985/86	57	67	18	43*	750	15.31	-	-	34	11	273	9	99	8	12.38	34.1	2.18
A Bremner	1985/86-1988/89	34	25	5	24	127	6.35	-	-	5	-	612	20	277	14	19.79	43.7	2.72
L Brown	1999/00-2003/04	40	35	10	90	300	12.00	-	1	3	-	36	0	34	0	-	-	5.67
DK Brownlee	1984/85-1986/87	28	13	6	9	26	3.71	-	-	6	-	442	14	191	12	15.92	36.8	2.59
SK Burke	1998/99-2003/04	85	76	12	81	934	14.59	-	5	29	-	5053	218	2116	145	14.59	34.8	2.51
S Burrows	1993/94-1999/00	103	91	14	42	844	10.96	-	-	26	-	2849	82	1512	50	30.24	57.0	3.18
E Burt	1976/77-1980/81	31	27	9	14	58	3.22	-	-	-	-	786	31	347	18	19.28	43.7	2.65
VL Burt	1969/70-1993/94	246	314	49	148*	7908	29.84	2	38	90	-	12738	422	4632	249	18.60	51.2	2.18
CA Campbell	1982/83-2003/04	120	117	30	59	1295	14.89	-	1	45	-	13158	617	4802	310	15.49	42.4	2.19
M Carmont	1997/98-2003/04	36	36	3	36	227	6.88	-	-	19	6	-	-	-	-	-	-	-
S Chamberlain	1977/78-1980/81	35	33	6	27	216	8.00	-	-	7	-	120	1	103	1	103.00	120.0	5.15
KA Craig	1994/95-2002/03	116	97	17	78	1313	16.41	-	7	44	-	3714	95	2543	105	24.22	35.4	4.11
S Day	1989/90-1992/93	27	7	3	5*	14	3.50	-	-	4	-	48	2	19	2	9.50	24.0	2.38
J Eason	1988/89-1992/93	41	32	9	15*	174	7.57	-	-	16	-	3333	130	1359	51	26.65	65.4	2.45
KE Flavell	1981/82-2001/02	181	210	42	123*	5970	35.54	1	35	96	-	8520	459	3930	174	22.59	49.0	2.77
SM Frahm	1988/89-2000/01	184	202	17	120	4271	23.09	5	15	105	21	72	0	71	0	-	-	5.92
MA Francis	1962/63-1991/92	176	164	35	47	1644	12.74	-	-	-	-	1890	32	971	47	20.66	40.2	3.08
JL Geary	1994/95-2000/01	90	72	16	69	988	17.64	-	3	52	-	5610	224	2343	156	15.02	36.0	2.51
KL Gilray	1960/61-1991/92	222	225	36	125*	4320	22.86	1	19	93	-	18035	919	5839	467	12.50	38.6	1.94
N Giubb	1995/96-2003/04	70	85	16	30	520	7.54	-	-	39	-	3870	94	2736	110	24.87	35.2	4.24
K Hadlee	1980/81-1988/89	45	52	10	100	778	18.52	1	1	32	-	4020	162	940	61	15.41	65.9	1.40
KM Houliston	1995/96-2003/04	75	45	11	34	228	6.71	-	-	23	-	2948	81	1566	71	22.06	41.5	3.19
SL Illingworth	1981/82-1995/96	168	194	35	135	4799	30.18	6	16	131	56	-	-	-	-	-	-	-
JK Jamieson	1979/80-1998/99	41	51	4	63	709	15.09	-	3	18	-	-	-	-	-	-	-	-
K Jamieson	1996/97-2000/01	32	22	5	14	65	3.82	-	-	1	-	1340	36	738	28	26.36	47.9	3.30
RS Kelly	1998/99-2003/04	39	27	4	49	233	10.13	-	-	8	-	890	14	575	20	28.75	44.5	3.88
JA Lawler	1996/97-2000/01	77	83	5	104	1723	22.09	3	10	28	-	-	-	-	-	-	-	-
BJ Legg	1979/80-1992/93	165	170	46	148*	3538	28.53	2	16	42	-	15547	903	4428	276	16.04	56.3	1.71
S Lloyd	1992/93-1998/99	83	77	17	65	590	9.83	-	1	26	-	3725	127	1792	109	16.44	34.2	2.89
C McCormack	1989/90-1991/92	29	5	2	2*	2	0.67	-	-	5	-	1332	48	622	15	41.47	88.8	2.80

Career	Mat	Inn	NO	HS	Runs	Ave	100	50	Ct	St	B	M	R	W	Ave	SR	Econ
DA McGregor	1966/67-1984/85	150	166	29	98	4055	29.60	-	22		2754	39	1844	73	25.26	37.7	4.02
A McKenna	1957/58-1992/93	330	373	72	137*	11923	39.61	6	77	127	-	8154	286	3629	258	14.07	31.6
L McMeeking	1988/89-1996/97	72	40	13	12*	106	3.93	-	-	23	-	2796	81	1465	38	38.55	73.6
T McNamara	1984/85-1988/89	66	37	20	16	136	8.00	-	-	17	-	4140	201	1419	80	17.74	51.8
BH McNeill	1998/99-2003/04	74	66	12	116	1221	22.61	1	4	21	-	3736	140	1685	120	14.04	31.1
AJMD Marsh	1998/99-2002/03	32	29	4	37	284	11.36	-	-	16	-	1302	26	747	41	18.22	31.8
RJ Milburn	2002/03-2003/04	31	33	6	123*	880	32.59	1	3	22	11	6	1	0	-	-	0.00
CJ Moffat	1993/94-1998/99	60	52	13	61*	385	9.87	-	1	22	-	2965	107	1420	84	16.90	35.3
A Morris	1991/92-1998/99	110	99	13	90	1112	12.93	-	4	35	-	6186	165	3503	133	26.34	46.5
C Murdoch	1993/94-1999/00	100	102	16	80	1117	12.99	-	-	45	-	643	8	515	21	24.52	30.6
K Nalder	1987/88-1988/89	25	12	5	5*	14	2.00	-	-	3	-	276	5	128	3	42.67	92.0
K O'Loughlin	1992/93-2002/03	75	79	10	92	1551	22.48	-	5	22	-	264	1	196	6	32.67	44.0
M Ormandy	1986/87-1991/92	85	83	13	97*	1632	23.31	-	9	10	-	3187	151	1646	64	25.72	49.8
N Payne	1995/96-2002/03	108	116	27	181*	5222	58.67	10	34	50	-	4050	135	1714	100	17.14	40.5
HJ Rae	1996/97-2003/04	93	70	14	70	1022	18.25	-	4	44	-	4788	183	2229	136	16.39	35.2
SJ Ratray	1976/77-1983/84	65	59	13	27	364	7.91	-	-		138	1	116	1	116.00	138.0	5.04
L Roberts	1977/78-1981/82	41	31	3	9	75	2.68	-	-	8	-	1362	37	723	23	31.43	59.2
JA Russell	1991/92-1995/96	46	49	11	56*	806	21.21	-	2	11	-	4035	176	1118	114	9.81	35.4
K Ryan	1993/94-1995/96	29	33	5	51	316	11.29	-	1	8	-	1703	56	865	43	20.12	39.6
AE Satterthwaite	2001/02-2003/04	38	28	2	54	364	14.00	-	1	4	-	1369	34	854	29	29.45	47.2
K Saunders	1998/99-2003/04	37	32	6	34	249	9.58	-	-	11	-	336	3	269	9	29.89	37.3
A Stanley	1993/94-2002/03	34	23	11	18	46	3.83	-	-	3	-	1458	46	773	40	19.33	36.5
K Thorpe	1997/98-1999/00	26	19	6	12	73	5.62	-	-	5	-	1194	32	686	34	20.18	35.1
JA Turner	1984/85-1985/86	25	20	6	50*	123	8.79	-	1	12	-	1908	102	590	26	22.69	73.4
E Warren	1976/77-1981/82	30	25	10	18	122	8.13	-	-		96	2	54	5	10.80	19.2	3.38
E Wilson	1981/82-1984/85	37	22	11	22	118	10.73	-	-	11	-	1716	42	571	19	30.05	90.3

Please note : statistics only appear for those who played since the amalgamation of the men's and women's clubs in 1977 - only some figures are known for those

First Grade Men's Records (combined)

Most Appearances:

GR Lucas	248	GB Smith	223	NE Francis	166
FP O'Brien	237	AJ Nuttall	213	MB Poore	154
PD Rutledge	228	MW Priest	204	J Smith	153
CG Crawford	223	TB Burt	197	BZ Harris	151

Most Innings:

GB Smith	340	J Smith	281	JM Ruston	234
GR Lucas	325	MW Priest	256	MB Poore	233
FP O'Brien	322	LA Smith	251	AJ Nuttall	221
CG Crawford	302	TB Burt	250	BZ Harris	213

Most Runs (Career):

FP O'Brien	9515	BZ Harris	6427	MW Priest	5207
CG Crawford	8158	JM Ruston	5784	SC Guillen	4954
GB Smith	7924	PGZ Harris	5384	F Woods	4646
J Smith	7720	LA Smith	5265	MC Bremner	4265
GR Lucas	6872	MB Poore	5224	JW Burt	4241

Most Centuries (Career):

FP O'Brien	13	PGZ Harris	6	MC Bremner	4
J Smith	11	HA Bishop	5	JW Burt	4
CG Crawford	10	JI Englefield	5	BZ Harris	4
F Woods	10	SC Guillen	5	GB Smith	4
CZ Harris	6	MB Poore	5	TW Reese	4

Most Fifties (Career):

FP O'Brien	50	JW Burt	29	LA Smith	24
CG Crawford	44	PGZ Harris	29	SC Guillen	22
BZ Harris	44	GR Lucas	29	ST Knox	22
GB Smith	41	JM Ruston	28	MB Poore	21
J Smith	36	MW Priest	25	F Woods	21

Most Runs in a Season:

BZ Harris	1040	1987/88	ST Knox	749	2002/03
F Woods	1006	1923/24	GE Charles	736	1991/92
PGZ Harris	813	1956/57	GR Lucas	716	1988/89
SC Guillen	776	1956/57	BZ Harris	705	1984/85
BZ Harris	763	1991/92	BZ Harris	704	1993/94
ST Knox	754	2003/04			

Most Centuries in a Season:

JI Englefield	4	2000/01	SC Guillen	3	1956/57
F Woods	3	1923/24			

Two Centuries in a Match:

SC Guillen	132 & 104*	v East Shirley	1956/57
MC Bremner	108* & 100*	v Marist	1989/90

Highest Individual Scores:

F Woods	234	1923/24	AC Bailey	165	2001/02
N Dorreen	226*	1926/27	SC Guillen	162*	1964/65
F Woods	223	1923/24	CG Crawford	159*	1924/25
F Woods	222*	1923/24	MB Poore	159	1961/62
FP O'Brien	215*	1931/32	CF Townsend	158	1949/50
BB Wood	201	1909/10	JI Englefield	156*	2001/02
F Woods	180	1922/23	HA Bishop	156	1927/28
HA Bishop	178	1914/15	CG Crawford	153*	1927/28
SC Guillen	173	1960/61	FP O'Brien	152	1936/37
CZ Harris	170*	1990/91	CZ Harris	150*	1993/94
BZ Harris	165	1992/93	F Wood	150	1906/07

Most Deliveries (Career):

AJ Nuttall	26849	MW Priest	19121	JA Harrison	14139
TB Burtt	26732	DM Sandman	18676	TL Jones	13146
KI Ferries	22077	MB Poore	18439	LC Sparks	12746
E Mulcock	20200	LT Watson	15264	RM Ford	12718

Most Wickets (Career):

TB Burtt	754	E Mulcock	523	JA Harrison	303
DM Sandman	737	KI Ferries	479	LC Sparks	301
AJ Nuttall	609	MB Poore	426	RM Ford	298
MW Priest	528	LT Watson	356	TL Jones	294

Most Five Wicket Innings Hauls:

DM Sandman	75	E Mulcock	28	TL Jones	20
TB Burtt	39	KI Ferries	20		

Most Ten Wicket Match Hauls:

DM Sandman	11	TL Jones	5
TB Burtt	7	E Mulcock	5

Most Wickets in a Season:

DM Sandman	84	1910/11	LC Sparks	54	1983/84
DM Sandman	76	1912/13	TL Jones	53	1964/65
TL Jones	70	1958/59	KI Ferries	50	1973/74
E Mulcock	65	1936/37	LT Watson	50	1981/82
GE Charles	56	1991/92	MW Priest	50	1985/86
AJ Nuttall	54	1980/81	HMR Richards	50	1987/88

Most Wickets in a Match:

E Mulcock	15	v Lancaster Park	1936/37
E Mulcock	15	v Lancaster Park	1939/40
MW Priest	12	v Sydenham	1994/95

Best Innings Bowling Figures:

BJ Harrison	9-12	1986/87	NE Francis	8-32	1981/82
CS Martin	8-29	1997/98	LT Watson	8-57	1980/81
LT Watson	8-31	1978/79	MW Priest	7-17	1996/97

Most Catches as a Fielder (Career):

GB Smith	161	MC Bremner	100	BZ Harris	95
MW Priest	135	NE Francis	100	CG Crawford	94
AJ Nuttall	117	FP O'Brien	98	JA Harrison	86

Most Wicket-keeping Dismissals (Career):

PD Rutledge	403 (298c 105st)	AF Johnstone	101 (90c 11st)
JC Thompson	159 (129c 30st)	GA Howell	92 (74c 18st)
SC Guillen	148 (108c 40st)	LA Smith	77 (60c 17st)
LR Brunton	146 (74c 72st)		

Most Wicket-keeping Dismissals in a Season:

PD Rutledge	47	1984/85	PD Rutledge	34	1992/93
PD Rutledge	37	1985/86	AM Keoghane	30	2000/01
PD Rutledge	37	1986/87	SC Guillen	29	1964/65
PD Rutledge	37	1987/88	LA Smith	29	1969/70
AF Johnstone	37	2002/03	PD Rutledge	29	1990/91
AF Johnstone	36	2003/04	AF Johnstone	29	2001/02

Most Wicket-keeping Dismissals in a Match:

PD Rutledge	9 (7c 2st)	v East Shirley	1982/83
JC Thompson	7 (4c 3st)	v Old Collegians	1972/73

Most Wicket-keeping Dismissals in an Innings:

LR Brunton	6 (3c 3st)	v Sydenham	1926/27
TJF Hayden	6 (6c)	v High School Old Boys	1957/58
PD Rutledge	6 (6c)	v Riccarton	1988/89
RJ Cain	6 (6c)	v Riccarton	1989/90

Highest Total by St Albans:

513	v West Christchurch	1948/49
-----	---------------------	---------

Lowest Total by St Albans:

41	v Marist	1985/86
----	----------	---------

First Grade Women's Records (combined)

Most Matches:

A McKenna	330	KE Flavell	181	KA Craig	116
P Blackler	322	MA Francis	176	A Morris	110
VL Burt	246	SL Illingworth	168	N Payne	108
KL Gilray	222	BJ Legg	165	S Burrows	103
HM Steere	222	DA McGregor	150	C Murdoch	100
SM Frahm	184	CA Campbell	120		

Most Runs (Career):

P Blackler	14158	N Payne	5222	DA McGregor	4055
A McKenna	11923	JE Stead	4989	BJ Legg	3538
VL Burt	7908	SL Illingworth	4799	JA Lawler	1723
HM Steere	7111	KL Gilray	4320	MA Francis	1644
KE Flavell	5970	SM Frahm	4271	M Ormandy	1632

Most Centuries (Career):

N Payne	10	A McKenna	6	JE Stead	3
P Blackler	9	SM Frahm	5	BJ Legg	2
SL Illingworth	6	JA Lawler	3	VL Burt	2

Most Fifties (Career):

A McKenna	77	N Payne	34	BJ Legg	16
P Blackler	42	DA McGregor	22	SM Frahm	15
VL Burt	38	KL Gilray	19	JE Stead	15
KE Flavell	35	SL Illingworth	16		

Most Runs in a Season:

P Blackler	900	1951/52	A McKenna	736	1982/83
N Payne	883	1996/97	P Blackler	734	1955/56
JA Lawler	872	1997/98	SL Illingworth	728	1993/94
VL Burt	821	1984/85	RC Milburn	704	2003/04
N Payne	815	2002/03	P Blackler	691	1953/54
KE Bond	806	1992/93	SM Frahm	679	1995/96
N Payne	794	1998/99	KE Bond	672	1991/92
N Payne	770	1997/98	VL Burt	631	1981/82

Highest Individual Scores:

P Blackler	213*	1956/57	N Payne	143*	2000/01
N Payne	181*	2002/03	N Payne	142	1998/99
P Blackler	180	1958/59	SL Illingworth	135	1993/94
N Payne	151	1997/98	KE Bond	123*	1993/94
VL Burt	148*	1982/83	RC Milburn	123*	2003/04
BJ Legg	148	1987/88			

Most Wickets (Career):

P Blackler	1172	T Reid	182	BH McNeill	120
KL Gilray	467	KE Flavell	174	JA Russell	114
CA Campbell	310	JL Geary	156	N Glubb	110
BJ Legg	276	SK Burke	145	S Lloyd	109
A McKenna	258	HJ Rae	136	KA Craig	105
VL Burt	249	A Morris	133	N Payne	100

Most Wickets in a Season:

P Blackler	85	1953/54	JL Geary	40	1997/98
P Blackler	68	1954/55	CJ Moffat	39	1997/98
CA Campbell	52	1986/87	SJ Rattray	37	1975/76
CA Campbell	47	1988/89	SA Harris	34	1976/77
SJ Rattray	43	1976/77	JA Russell	34	1994/95
CA Campbell	41	1983/84	JL Geary	34	1996/97
CA Campbell	40	1985/86			

Best Innings Bowling Figures:

JA Russell	8-31	1994/95	CA Campbell	7-25	1983/84
CA Campbell	7-17	1988/89	A McKenna	6-5	1979/80
T Woodbury	7-23	1992/93	CA Campbell	6-9	1985/86

Most Wicket-keeping Dismissals (Career):

MA Francis	171	SM Frahm	113	T Baker	76
SL Illingworth	150	JE Stead	81	J Stevens	52

Highest Any Wicket Partnership:

245*	3rd	N Payne (125*) & JA Lawler (99*)	v South Canterbury	1997/98
245	2nd	N Payne (143*) & BH McNeill (94)	v Sydenham	2001/02
244*	1st	VL Burt (148*) & A McKenna (88*)	v Lancaster Park	1982/83
209	1st	JE Stead (86*) & P Blackler (114*)	v St Albans II	1962/63

Highest Totals by St Albans:

377/4	v Sydenham	2000/01	351/6	v East Shirley	2000/01
358/3	v Lancaster Park	1997/98	309/5	v East Shirley	1997/98
353/7	v Sydenham	1995/96	304/3	v East Shirley	1997/98
353/9	v Lancaster Park	1997/98	302/5	v Western	1957/58

Highest Totals against St Albans:

299/3	by Sydenham	1982/83	267/4	by Sydenham	1991/92
277/5	by Sydenham	1983/84	266/8	by Marist	1997/98

Lowest Totals by St Albans:

4	v Technical	1964/65	8	v Mai Moa	1958/59
---	-------------	---------	---	-----------	---------

Lowest Totals against St Albans:

3	by Marama	1952/53	11	by Oddfellows	1950/51
7	by Hagley	1969/70			